



Folio Detail Exchange Specification

Version 1.0

11 May 2012

About HTNG

Hotel Technology Next Generation (HTNG) is a non-profit association with a mission to foster, through collaboration and partnership, the development of next-generation systems and solutions that will enable hoteliers and their technology vendors to do business globally in the 21st century; to be recognized as a leading voice of the global hotel community, articulating the technology requirements of hotel companies of all sizes to the vendor community; and to facilitate the development of technology models for hospitality that will foster innovation, improve the guest experience, increase the effectiveness and efficiency of hotels, and create a healthy ecosystem of technology suppliers.

Copyright 2012, Hotel Technology Next Generation

All rights reserved.

No part of this publication may be reproduced, stored in a retrieval system, or transmitted, in any form or by any means, electronic, mechanical, photocopying, recording, or otherwise, without the prior permission of the copyright owner.

For any software code contained within this specification, permission is hereby granted, free-of-charge, to any person obtaining a copy of this specification (the "Software"), to deal in the Software without restriction, including without limitation the rights to use, copy, modify, merge, publish, distribute, sublicense, and/or sell copies of the Software, and to permit persons to whom the Software is furnished to do so, subject to the above copyright notice and this permission notice being included in all copies or substantial portions of the Software.

Manufacturers and software providers shall not claim compliance with portions of the requirements of any HTNG specification or standard, and shall not use the HTNG name or the name of the specification or standard in any statements about their respective product(s) unless the product(s) is (are) certified as compliant to the specification or standard.

THE SOFTWARE IS PROVIDED "AS IS", WITHOUT WARRANTY OF ANY KIND, EXPRESS OR IMPLIED, INCLUDING BUT NOT LIMITED TO THE WARRANTIES OF MERCHANTABILITY, FITNESS FOR A PARTICULAR PURPOSE, AND NON-INFRINGEMENT. IN NO EVENT SHALL THE AUTHORS OR COPYRIGHT HOLDERS BE LIABLE FOR ANY CLAIM, DAMAGES, OR OTHER LIABILITY, WHETHER IN AN ACTION OF CONTRACT, TORT OR OTHERWISE, ARISING FROM, OUT OF, OR IN CONNECTION WITH THE SOFTWARE OR THE USE OR OTHER DEALINGS IN THE SOFTWARE.

Permission is granted for implementers to use the names, labels, etc. contained within the specification. The intent of publication of the specification is to encourage implementations of the specification.

This specification has not been verified for avoidance of possible third-party proprietary rights. In implementing this specification, usual procedures to ensure the respect of possible third-party intellectual property rights should be followed.

The names Hotel Technology Next Generation and HTNG, and logos depicting these names, are trademarks of Hotel Technology Next Generation. Permission is granted for implementers to use the aforementioned names in technical documentation for the purpose of acknowledging the copyright and including the notice required above. All other use of the aforementioned names and logos requires the permission of Hotel Technology Next Generation, either in written form or as explicitly permitted for the organization's members through the current terms and conditions of membership.

Table of contents

VERSION 1.0	1
11 MAY 2012	1
1 THIS SPECIFICATION AT A GLANCE.....	4
2 DOCUMENT INFORMATION.....	5
2.1 DOCUMENT HISTORY	5
2.2 DOCUMENT PURPOSE	6
2.3 SCOPE.....	6
2.4 RELATIONSHIP TO OTHER STANDARDS.....	6
2.5 AUDIENCE	6
2.6 OVERVIEW.....	7
2.7 KNOWN LIMITATIONS.....	7
3 COMPONENT SCENARIOS.....	8
3.1 PUSH.....	8
3.1.1 Overview.....	8
3.1.2 Roles	8
3.1.3 Use Case	8
3.1.4 Message Flows.....	9
3.1.5 Sample Request.....	9
3.1.6 Sample Response	9
3.2 PULL.....	9
3.2.1 Overview.....	9
3.2.2 Roles	9
3.2.3 Use Case	9
3.2.4 Message Flows.....	10
3.2.5 Sample Request.....	10
3.2.6 Sample Response	10
4 MESSAGES	11
4.1 PUSH.....	11
4.1.1 Data Element Table – Request.....	11
4.1.2 Data Element Table – Response	26
4.1.3 Global Sample Message – Request	28
4.1.4 Global Sample Message – Response.....	29
4.2 PULL.....	29
4.2.1 Data Element Table – Request.....	29
4.2.2 Data Element Table – Response	31
4.2.3 Global Sample Message – Request	46
4.2.4 Global Sample Message – Response.....	47
5 APPENDICES.....	49
5.1 GLOSSARY OF TERMS	49
5.2 IMPLEMENTATION NOTES	49
5.3 REFERENCED DOCUMENTS	50

1 This Specification at a Glance

It is very difficult to get folio line-item and transaction-level detail out of revenue-generating systems in a system-agnostic way. Therefore, it is difficult to support analytics, loyalty, invoice dematerialization, VAT tax rebate, centralized direct billing, corporate expense reporting and other applications.

This specification will describe a set of messages resulting in XSDs and a WSDL that will pass presentation and transactional-level data for a guest record from the folio producing system ('Folio Detail Producer') to a folio receiving system ('Folio Detail Consumer'). A Folio Detail Producer may be a PMS or a POS system that generates this data. A Folio Detail Consumer may be a guest intelligence system, a guest loyalty system, or a financial system.

Presentation data is what is shown to a guest on a folio (e.g. corporate rate package that is inclusive of multiple elements). Transactional-level data provides additional detail behind the line items that are presented to a guest.

This specification enhances the current [HTNG Kiosk Integration specification](#) for retrieving folio data.

2 Document Information

2.1 Document History

Version	Date	Author	Comments
0.01	20 Oct 2011	Stephen Burke, Bill Rosenberg	Created use cases
0.02	24 Oct 2011	Folio Detail Exchange Workgroup	Updated use cases
0.03	27 Oct 2011	Folio Detail Exchange Workgroup	Updated use cases
0.04	01 Nov 2011	Folio Detail Exchange Workgroup	Slight modifications
0.05	10 Feb 2012	Stephen Burke	Completed section 2 and added strawman message flows in sections 3.1.4 and 3.2.4
0.06	15 Feb 2012	Bill Rosenberg	Updated 'Specification at a Glance'
0.07	2 Mar 2012	Jay Rosamilia	Seeded Data Element Tables and updated diagrams
0.08	15 Mar 2012	Folio Detail Exchange Workgroup	Included Implementation Notes
0.09	20 Mar 2012	Jay Rosamilia	Completed Data Element Tables
0.10	21 Mar 2012	Stephen Burke	Updated Paid Invoices implementation note
0.11	28 Mar 2012	Gary Gage	Updated Samples
0.12	30 Mar 2012	Jay Rosamilia	Fixed diagram
0.13	2 Apr 2012	Workgroup	Added pull sample message. Reworded RevenueCategoryCode Implementaion Notes.
0.14	10 Apr 2012	Jay Rosamilia	Updated sample messages. Added RevenueCategoryCode attribute.
0.90	13 Apr 2012	Kylene Reese	Member review period
0.91	4 May 2012	Kylene Reese	Vote period
1.0	11 May 2012	Folio Detail Exchange Workgroup	2012A Release

2.2 Document Purpose

Hotel systems have an increasing need to share data on the guest. As demand in the marketplace grows for various solutions providing customer intelligence, invoice dematerialization, tax reclamation, corporate expense management, accounting, guest loyalty and guest self service, there is an ever increasing requirement for the PMS to share *detailed* information about the guest's stay. While some hotel systems have methods by which they can export various guest stay data, there remains a need for an industry standard method of exchanging the guest folio.

This document explains the HTNG Folio Detail Exchange specification, covering both the intended use cases and the technical specification. This document will serve as a reference to those who are evaluating the specification, and those technical users who are implementing the specification.

2.3 Scope

This document includes, directly or by reference, all information required to implement the integration between producers and consumers of guest folio data. It does not include every possible use case for these integrations, nor does it include information on how to process the guest folio within the consuming system, or make specific, detailed industry standard code tables or 'maps' which can be used by consuming systems to interpret all of the transaction or product and service codes that may be sent by the Folio Detail Producer as part of the folio detail. Some aspects, such as these, are left to the trading partners. Please note that these features may be incorporated in a future version.

2.4 Relationship to Other Standards

This specification references both the [HTNG Kiosk Integration specification](#) and the [HTNG Product Distribution specifications](#), which are derived from the OpenTravel specification. Familiarity with these specifications is recommended.

2.5 Audience

The intended audience of this document is development teams and system designers of PMS, POS, guest self-service systems, business or guest intelligence systems, guest loyalty systems, and financial systems seeking to implement these standardized interface specifications within their products. This document also provides business process flows that may be used by Hotel Groups looking to standardize their interfaces within their hotel architectures.

2.6 Overview

Content contained in this document has been designed to assist the design, implementation and integration of folio detail data that can be exchanged by a variety of systems. A brief overview of each section is as follows:

Section 3 – Component Scenarios

This section includes the scenario overviews, diagrams, roles, use cases, data element tables, and sample messages regarding push and pull of folio messages between integrating systems. The technical artifacts (XSDs and WSDLs) for the certification release of this specification can be found in a separate ZIP file included with this specification.

Section 4 – Messages

This section includes data element tables for request and response.

Section 5 – Appendices

This section includes terms, implementation requirements, referenced documents, as well as common HTNG schema components referenced in this document.

2.7 Known Limitations

Specific folio details that were intentionally left out of this version of the document include:

- Certain details from the POS, including modifiers and specifics about guest preferences, such as the way a guest had his/her steak prepared, condiments ordered or pizza toppings
- Products or services provided gratis (comps)
- Use of guest amenities, such as the number of times the guest used the pool, spa, HSIA, etc.

The workgroup also knowingly decided to not produce specific scenarios regarding “batch” or “real-time” flows. This is left up to the individual trading partners, but should be implemented consistently with HTNG synchronous and asynchronous communication methods. These may be found in the Web Services Framework section (part one) of the [HTNG Property Web Services specification](#).

3 Component Scenarios

3.1 Push

3.1.1 Overview

This use case describes the business and system processes and requirements for pushing folio detail.

3.1.2 Roles

Provider	Folio Detail Producer
Actor	Folio Detail Consumer

3.1.3 Use Case

Brief Description

- Folio Detail Producer sends the customer folios to a specific Folio Detail Consumer based on business rules that indicate that this Folio Detail Consumer is eligible to receive the guest's folio detail. The producer then transfers the folio detail data to the consumer.
- This activity may occur:
 - once per pre-ordained point in time per time period (for example, once daily at midnight)
 - once per pre-ordained time period upon completion of some event (for example, once daily upon completion of night audit tasks)
 - whenever a pre-defined, subscribed event takes place in the producing system (for example, whenever there is an update performed on the customer folio or after guest check out)
- Business rules in the integrating systems will determine whether a single or multiple folios are contained within a message payload.

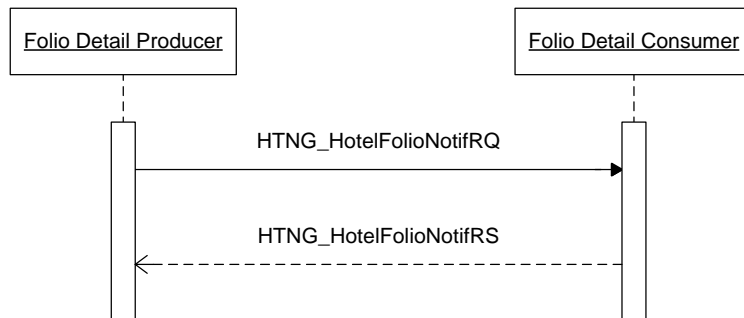
Preconditions

- One system has been identified as being a valid producer of customer folio detail.
- One or more systems have been identified as being valid (technically capable and legally valid) consumers of customer folio detail.
- Producing and consuming system should comply with relevant and applicable customer data privacy requirements.
- Appropriate business rules have been agreed upon by trading partners.

Postconditions

- An appropriate set of agreed upon actions should be taken by the consumer in the event that it receives ineligible customer data.

3.1.4 Message Flows



3.1.5 Sample Request

See section [4.1.3](#)

3.1.6 Sample Response

See section [4.1.4](#)

3.2 Pull

3.2.1 Overview

This use case describes the business and system processes and requirements for pulling a folio from a Folio Detail Producer. *Please note that it will be up to trading partners whether payload includes reservation information in the first response or if a second request is necessary.*

3.2.2 Roles

Provider	Folio Detail Producer
Actor	Folio Detail Consumer

3.2.3 Use Case

Brief Description

- The Folio Detail Consumer initiates a request to the Folio Detail Producer to send folios based a certain criteria in the request. Criteria may be guest status, stay date range, etc.
- The response will contain a folio, set of folios or an error message indicating why the request cannot be fulfilled at this time.
- Business rules in the integrating systems will determine whether a single or multiple folios are contained within a message payload.

Preconditions

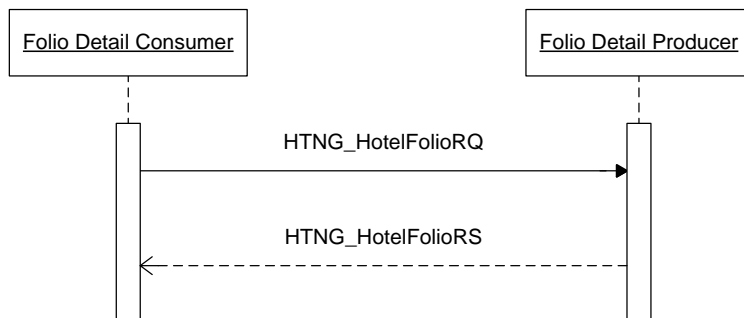
- The Folio Detail Producer has been identified as being a valid producer of customer folio detail.

- The Folio Detail Consumer has the proper authority to retrieve folio information from the Folio Detail Producer.
- Producing and consuming system should comply with relevant and applicable customer data privacy requirements.

Postconditions

- An appropriate set of agreed upon actions should be taken by the consumer in the event that it receives ineligible customer data.

3.2.4 Message Flows



3.2.5 Sample Request

See section [4.2.3](#)

3.2.6 Sample Response

See section [4.2.4](#)

4 Messages

4.1 Push

4.1.1 Data Element Table – Request

Element @Attribute	Num	Description/Contents
HTNG_HotelFolioNotifRQ	1	Root element of the message.
@EchoToken	1	A reference for additional message identification, assigned by the requesting host system. When a request message includes an echo token, the corresponding response message MUST include an echo token with an identical value.
@TimeStamp	1	Indicates the creation date and time of the message in UTC using the following format specified by ISO 8601; YYYY-MM-DDThh:mm:ssZ with time values using the 24-hour clock (e.g., 20 November 2003, 1:59:38 pm UTC becomes 2003-11-20T13:59:38Z).
@Version	1	For all OpenTravel versioned messages, the version of the message is indicated by a decimal value.
HTNG_HotelFolioNotifRQ / UniqueID	1	An identifier used to uniquely reference an object in a system (e.g., an airline reservation reference, customer profile reference, booking confirmation number, or a reference to a previous availability quote).
@Type	1	A reference to the type of object defined by the UniqueID element. Refer to OpenTravel Code List Unique ID Type (UIT).
@ID_Context	0..1	Used to identify the source of the identifier (e.g., IATA, ABTA).
@ID	1	A unique identifying value assigned by the creating system. The ID attribute may be used to reference a primary-key value within a database or in a particular implementation.
HTNG_HotelFolioNotifRQ / Folios	0..1	A collection of folios.
HTNG_HotelFolioNotifRQ / Folios / Folio	1..n	An individual folio of charges.
@GuestPayable	1	When true, the guest may provide payment for the folio. When false, the guest may not provide

Element @Attribute	Num	Description/Contents
		payment for the folio.
@FolioID	1	Unique PMS identifier if a given folio.
@InvoiceID	0..1	
@FolioGroupingID	0..1	For folios with a FolioType of "Guest" this differentiates them. This provides flexibility to group incidental charges, room charges, or any other logical grouping.
@GuestViewable	1	When true, the comment may be shown to the consumer. When false, the comment may not be shown to the consumer.
@FolioType	1	An enumeration of the following values: Group, Corporate, Wholesaler, Comp Accounting, Guest, Package, Other.
HTNG_HotelFolioNotifRQ / Folios / Folio / BasicPropertyInfo	0..1	An abbreviated short summary of hotel descriptive information.
@HotelName	0..1	A text field used to communicate the proper name of the hotel.
@HotelCode	0..1	The code that uniquely identifies a single hotel property. The hotel code is decided between vendors.
@HotelCodeContext	0..1	A text field used to communicate the context (or source of - i.e., Sabre, Galileo, Worldspan, Amadeus) the HotelReferenceGroup codes.
@ChainCode	0..1	The code that identifies a hotel chain or management group. The hotel chain code is decided between vendors. This attribute is optional if the hotel is an independent property that can be identified by the HotelCode attribute.
@BrandCode	0..1	A code that identifies the brand or flag of a hotel, often used for independently-owned or franchised properties who are known by a specific brand.
HTNG_HotelFolioNotifRQ / Folios / Folio / BasicPropertyInfo / Address / AddressLine	0..5	When the address is unformatted (FormattedInd="false") these lines will contain free form address details. When the address is formatted and street number and street name must be sent independently, the street number will be sent using StreetNmbr, and the street

Element @Attribute	Num	Description/Contents
		name will be sent in the first AddressLine occurrence.
HTNG_HotelFolioNotifRQ / Folios / Folio / BasicPropertyInfo / Address / CityName	0..1	City (e.g., Dublin), town, or postal station (i.e., a postal service territory, often used in a military address).
HTNG_HotelFolioNotifRQ / Folios / Folio / BasicPropertyInfo / Address / PostalCode	0..1	Post Office Code number.
HTNG_HotelFolioNotifRQ / Folios / Folio / BasicPropertyInfo / Address / StateProv	0..1	State or Province name (e.g., Texas).
@StateCode	0..1	The standard code or abbreviation for the state, province, or region.
HTNG_HotelFolioNotifRQ / Folios / Folio / BasicPropertyInfo / Address / CountryName	0..1	Country name (e.g., Ireland).
@Code	0..1	ISO 3166 code for a country.
HTNG_HotelFolioNotifRQ / Folios / Folio / BasicPropertyInfo / ContactNumbers / ContactNumber	0..1	Contact numbers of the hotel property. Examples are telephone and fax numbers.
@PhoneNumber	0..1	Telephone number assigned to a single location.
@CountryAccessCode	0..1	Code assigned by telecommunications authorities for international country access identifier.
@AreaCityCode	0..1	Code assigned for telephones in a specific region, city, or area.
HTNG_HotelFolioNotifRQ / Folios / Folio / CustomerProfile	1	The profile for the customer incurring the charges.
@ProfileType	1	Code to specify a profile such as Customer, Tour Operator, Corporation, etc. Refer to OpenTravel Code List Profile Type (PRT).
HTNG_HotelFolioNotifRQ / Folios / Folio / CustomerProfile / Customer / PersonName / GivenName	0..1	Given name, first name or names.
HTNG_HotelFolioNotifRQ /	0..1	The middle name of the person name

Element @Attribute	Num	Description/Contents
Folios / Folio / CustomerProfile / Customer / PersonName / MiddleName		
HTNG_HotelFolioNotifRQ / Folios / Folio / CustomerProfile / Customer / PersonName / Surname	0..1	Family name, last name.
HTNG_HotelFolioNotifRQ / Folios / Folio / CustomerProfile / Customer / PersonName / NameSuffix	0..1	Hold various name suffixes and letters (e.g., Jr., Sr., III, Ret., Esq.).
HTNG_HotelFolioNotifRQ / Folios / Folio / CustomerProfile / Customer / PersonName / NameTitle	0..1	Degree or honors (e.g., Ph.D., M.D.).
HTNG_HotelFolioNotifRQ / Folios / Folio / CustomerProfile / Customer / Address / AddressLine	0..1	When the address is unformatted (FormattedInd="false") these lines will contain free form address details. When the address is formatted and street number and street name must be sent independently, the street number will be sent using StreetNmbr, and the street name will be sent in the first AddressLine occurrence.
HTNG_HotelFolioNotifRQ / Folios / Folio / CustomerProfile / Customer / Address / CityName	0..1	City (e.g., Dublin), town, or postal station (i.e., a postal service territory, often used in a military address).
HTNG_HotelFolioNotifRQ / Folios / Folio / CustomerProfile / Customer / Address / PostalCode	0..1	Post Office Code number.
HTNG_HotelFolioNotifRQ / Folios / Folio / CustomerProfile / Customer / Address / StateProv	0..1	State or Province name (e.g., Texas).
@StateCode	0..1	The standard code or abbreviation for the state, province, or region.

Element @Attribute	Num	Description/Contents
HTNG_HotelFolioNotifRQ / Folios / Folio / CustomerProfile / Customer / Address / CountryName	0..1	Country name (e.g., Ireland).
@Code	0..1	A two character country code as defined in ISO3166.
HTNG_HotelFolioNotifRQ / Folios / Folio / CustomerProfile / CompanyInfo / CompanyName	1	Identifies a company by name.
@CodeContext	0..1	Identifies the context of the identifying code, such as DUNS, IATA or internal code, etc.
@CompanyShortName	0..1	Used to provide the company common name.
@Code	1	Identifies a company by the company code.
HTNG_HotelFolioNotifRQ / Folios / Folio / CustomerProfile / CompanyInfo / AddressInfo / AddressLine	0..5	When the address is unformatted (FormattedInd="false") these lines will contain free form address details. When the address is formatted and street number and street name must be sent independently, the street number will be sent using StreetNmbr, and the street name will be sent in the first AddressLine occurrence.
HTNG_HotelFolioNotifRQ / Folios / Folio / CustomerProfile / CompanyInfo / AddressInfo / CityName	0..1	City (e.g., Dublin), town, or postal station (i.e., a postal service territory, often used in a military address).
HTNG_HotelFolioNotifRQ / Folios / Folio / CustomerProfile / CompanyInfo / AddressInfo / PostalCode	0..1	Post Office Code number.
HTNG_HotelFolioNotifRQ / Folios / Folio / CustomerProfile / CompanyInfo / AddressInfo / StateProv	0..1	State or Province name (e.g., Texas).
@StateCode	0..1	The standard code or abbreviation for the state, province, or region.
HTNG_HotelFolioNotifRQ / Folios / Folio / CustomerProfile	0..1	The name or code of a country (e.g., as used in an address or to specify citizenship of a traveler).

Element @Attribute	Num	Description/Contents
/ CompanyInfo / AddressInfo / CountryName		
@Code	0..1	A two character country code as defined in ISO3166.
HTNG_HotelFolioNotifRQ / Folios / Folio / PayerProfile	0..1	The profile for the entity with financial responsibility for the charges incurred.
@ProfileType	1	Code to specify a profile such as Customer, Tour Operator, Corporation, etc. Refer to OpenTravel Code List Profile Type (PRT).
HTNG_HotelFolioNotifRQ / Folios / Folio / PayerProfile / Customer / PersonName / GivenName	0..1	Given name, first name or names.
HTNG_HotelFolioNotifRQ / Folios / Folio / PayerProfile / Customer / PersonName / MiddleName	0..1	The middle name of the person name
HTNG_HotelFolioNotifRQ / Folios / Folio / PayerProfile / Customer / PersonName / Surname	0..1	Family name, last name.
HTNG_HotelFolioNotifRQ / Folios / Folio / PayerProfile / Customer / PersonName / NameSuffix	0..1	Hold various name suffixes and letters (e.g., Jr., Sr., III, Ret., Esq.).
HTNG_HotelFolioNotifRQ / Folios / Folio / PayerProfile / Customer / PersonName / NameTitle	0..1	Degree or honors (e.g., Ph.D., M.D.).
HTNG_HotelFolioNotifRQ / Folios / Folio / PayerProfile / Customer / Address / AddressLine	0..5	When the address is unformatted (FormattedInd="false") these lines will contain free form address details. When the address is formatted and street number and street name must be sent independently, the street number will be sent using StreetNmbr, and the street name will be sent in the first AddressLine occurrence.

Element @Attribute	Num	Description/Contents
HTNG_HotelFolioNotifRQ / Folios / Folio / PayerProfile / Customer / Address / CityName	0..1	City (e.g., Dublin), town, or postal station (i.e., a postal service territory, often used in a military address).
HTNG_HotelFolioNotifRQ / Folios / Folio / PayerProfile / Customer / Address / PostalCode	0..1	Post Office Code number.
HTNG_HotelFolioNotifRQ / Folios / Folio / PayerProfile / Customer / Address / StateProv	0..1	State or Province name (e.g., Texas).
@StateCode	0..1	The standard code or abbreviation for the state, province, or region.
HTNG_HotelFolioNotifRQ / Folios / Folio / PayerProfile / Customer / Address / CountryName	0..1	Country name (e.g., Ireland).
@Code	0..1	A two character country code as defined in ISO3166.
HTNG_HotelFolioNotifRQ / Folios / Folio / PayerProfile / CompanyInfo / CompanyName	0..1	Identifies a company by name.
@CodeContext	0..1	Identifies the context of the identifying code, such as DUNS, IATA or internal code, etc.
@CompanyShortName	0..1	Used to provide the company common name.
@Code	0..1	Identifies a company by the company code.
HTNG_HotelFolioNotifRQ / Folios / Folio / PayerProfile / CompanyInfo / AddressInfo / AddressLine	0..5	When the address is unformatted (FormattedInd="false") these lines will contain free form address details. When the address is formatted and street number and street name must be sent independently, the street number will be sent using StreetNmbr, and the street name will be sent in the first AddressLine occurrence.
HTNG_HotelFolioNotifRQ / Folios / Folio / PayerProfile / CompanyInfo / AddressInfo / CityName	0..1	City (e.g., Dublin), town, or postal station (i.e., a postal service territory, often used in a military address).

Element @Attribute	Num	Description/Contents
HTNG_HotelFolioNotifRQ / Folios / Folio / PayerProfile / CompanyInfo / AddressInfo / PostalCode	0..1	Post Office Code number.
HTNG_HotelFolioNotifRQ / Folios / Folio / PayerProfile / CompanyInfo / AddressInfo / StateProv	0..1	State or Province name (e.g., Texas).
@StateCode	0..1	The standard code or abbreviation for the state, province, or region.
HTNG_HotelFolioNotifRQ / Folios / Folio / PayerProfile / CompanyInfo / AddressInfo / CountryName	0..1	The name or code of a country (e.g., as used in an address or to specify citizenship of a traveler).
@Code	0..1	A 2 character country code as defined in ISO3166.
HTNG_HotelFolioNotifRQ / Folios / Folio / RoomStayInformation	0..1	
@RoomStayStatus	0..1	Identifies the status of the room stay.
HTNG_HotelFolioNotifRQ / Folios / Folio / RoomStayInformation / RoomTypes	0..1	A collection of Room Types associated with a particular Room Stay.
HTNG_HotelFolioNotifRQ / Folios / Folio / RoomStayInformation / RoomTypes / RoomType	1..n	Room type details.
@RoomCategory	0..1	Indicates the category of the room. Typical values would be Moderate, Standard, or Deluxe. Refer to OpenTravel Code List Segment Category Code (SEG).
@RoomTypeCode	0..1	Specific system room type code, ex: A1K, A1Q etc.
@RoomID	0..1	A string value representing the unique identification of a room if the request is looking for a specific room.
@RoomType	0..1	(Formerly, RoomInventoryCode) A code value that

Element @Attribute	Num	Description/Contents
		indicates the type of room for which this request is made, e.g.: double, king, etc. Values may use the Hotel Descriptive Content table or a codes specific to the property or hotel brand.
@IsRoom	0..1	Indicates the room is a sleeping room when true.
HTNG_HotelFolioNotifRQ / Folios / Folio / RoomStayInformation / RatePlans	0..1	A collection of Rate Plans associated with a particular Room Stay.
HTNG_HotelFolioNotifRQ / Folios / Folio / RoomStayInformation / RatePlans / RatePlan	1..n	Rate plan details.
@RatePlanCode	0..1	The RatePlanCode assigned by the receiving system for the inventory item in response to a new rate plan notification. (Implementation Notes: This would only be returned when the notification is of type New and the sender is translating RatePlanCode values. On subsequent transactions for this rate plan, the sender would populate the RatePlanCode attribute with this value returned by the receiver.)
@RatePlanName	0..1	Provides the name of the rate plan or group. Typically used with RatePlanType to further describe the rate plan.
HTNG_HotelFolioNotifRQ / Folios / Folio / RoomStayInformation / GuestCounts	0..1	A collection of Guest Counts associated with Room Stay. A child Guest Count element is required for each distinct age group.
HTNG_HotelFolioNotifRQ / Folios / Folio / RoomStayInformation / GuestCounts / GuestCount	1..9 9	A recurring element that identifies the number of guests and ages of the guests.
@AgeQualifyingCode	0..1	A code representing a business rule that determines the charges for a guest based upon age range (e.g. Adult, Child, Senior, Child With Adult, Child Without Adult). This attribute allows for an increase in rate by occupant class. Refer to

Element @Attribute	Num	Description/Contents
		OpenTravel Code List Age Qualifying Code (AQC).
@Count	0..1	The number of guests in one AgeQualifyingCode or Count.
HTNG_HotelFolioNotifRQ / Folios / Folio / RoomStayInformation / TimeSpan	0..1	The Time Span which covers the Room Stay.
@Start	0..1	The starting value of the time span. For instance, the arrival date.
@End	0..1	The ending value of the time span. For instance, the departure date.
HTNG_HotelFolioNotifRQ / Folios / Folio / RevenueSummary / GrossAmount	0..1	The total booking cost to the customer.
@Amount	1	A monetary amount.
HTNG_HotelFolioNotifRQ / Folios / Folio / RevenueSummary / TaxItems	0..1	The total taxes charged to the customer.
@Amount	1	A monetary amount.
HTNG_HotelFolioNotifRQ / Folios / Folio / RevenueSummary / BalanceDueAmount	1	The amount remaining to be paid by the customer, i.e., GrossAmount less the greater of DepositAmount and Amount Received.
@Amount	1	A monetary amount.
HTNG_HotelFolioNotifRQ / Folios / Folio / RevenueSummary / AmountReceived	0..1	The payment amount received against the reservation.
@Amount	1	A monetary amount.
HTNG_HotelFolioNotifRQ / Folios / Folio / RevenueDetails	1	A collection of line items
HTNG_HotelFolioNotifRQ / Folios / Folio / RevenueDetails / RevenueDetail	1..n	The line item detail of specific revenue transactions.

Element @Attribute	Num	Description/Contents
@ReferenceID	0..1	The unique transaction identifier for this posting.
@TransactionDate	1	The date the transaction was posted.
@PMSRevenueCode	0..1	The transaction code assigned by the PMS.
@RevenueCategoryCode	0..1	Describes the type of revenue generated. Refer to OpenTravel Code List Revenue Category Code (RCC).
@CurrencyCode	0..1	The code specifying a monetary unit. Use ISO 4217, three alpha code.
@Amount	1	A monetary amount.
@Description	1	The line item detail description for this posting.
@DecimalPlaces	1	Indicates the number of decimal places for a particular currency. This is equivalent to the ISO 4217 standard "minor unit". Typically used when the amount provided includes the minor unit of currency without a decimal point (e.g., USD 8500 needs DecimalPlaces="2" to represent \$85).
@GuestViewable		When true, the line item may be shown to the consumer. When false, the line item must not be shown to the consumer.
HTNG_HotelFolioNotifRQ / Folios / Folio / RevenueDetails / RevenueDetail / FolioIDs	1	This element is not implemented in the Kiosk messaging, but the OpenTravel schema requires its use. Only a single child FolioID is needed in order to fulfill the schema requirement.
HTNG_HotelFolioNotifRQ / Folios / Folio / RevenueDetails / RevenueDetail / FolioIDs / FolioID	1	Even though this value is not used in the Kiosk messaging, its value should match the value of \\HTNG_HotelFolioNotifRQ\Folios\Folio@FolioID.
HTNG_HotelFolioNotifRQ / Folios / Folio / RevenueDetails / RevenueDetail / UnitPrice	0..1	The unit amount charged for the service including additional amounts and fees.
@AmountBeforeTax	0..1	The unit amount not including any associated tax (e.g., sales tax, VAT, GST or any associated tax).
@AmountAfterTax	0..1	The unit amount including all associated taxes (e.g., sales tax, VAT, GST or any associated tax).
HTNG_HotelFolioNotifRQ / Folios / Folio / RevenueDetails / RevenueDetail / UnitPrice /	0..1	A collection of taxes.

Element @Attribute	Num	Description/Contents
Taxes		
HTNG_HotelFolioNotifRQ / Folios / Folio / RevenueDetails / RevenueDetail / UnitPrice / Taxes / Tax	1..n	Applicable tax element. This element allows for both percentages and flat amounts. If one field is used, the other should be zero since logically, taxes should be calculated in only one of the two ways.
@Type	0..1	Used to indicate if the amount is inclusive or exclusive of other charges, such as taxes, or is cumulative (amounts have been added to each other).
@Percent	0..1	Fee percentage; if zero, assume use of the Amount attribute (Amount or Percent must be a zero value).
@Amount	1	A monetary amount.
@Code	0..1	Code identifying the fee (e.g., agency fee, municipality fee). Refer to OpenTravel Code List Fee Tax Type (FTT).
HTNG_HotelFolioNotifRQ / Folios / Folio / RevenueDetails / RevenueDetail / UnitPrice / Taxes / Tax / TaxDescription	1	The tax description item.
@Name	1	The line item detail description for this tax posting.
HTNG_HotelFolioNotifRQ / Folios / Folio / RevenueDetails / RevenueDetail / ExtendedPrice	0..1	The total amount charged for the service including additional amounts and fees.
@AmountBeforeTax	0..1	The unit amount not including any associated tax (e.g., sales tax, VAT, GST or any associated tax).
@AmountAfterTax	0..1	The unit amount including all associated taxes (e.g., sales tax, VAT, GST or any associated tax).
@Quantity	1	The number of items purchased.
HTNG_HotelFolioNotifRQ / Folios / Folio / RevenueDetails / RevenueDetail / ExtendedPrice / Taxes	0..1	A collection of taxes.
HTNG_HotelFolioNotifRQ / Folios / Folio / RevenueDetails /	1..n	Applicable tax element. This element allows for both percentages and flat amounts. If one field is

Element @Attribute	Num	Description/Contents
RevenueDetail / ExtendedPrice / Taxes / Tax		used, the other should be zero since logically, taxes should be calculated in only one of the two ways.
@Type	0..1	Used to indicate if the amount is inclusive or exclusive of other charges, such as taxes, or is cumulative (amounts have been added to each other).
@Percent	0..1	Fee percentage. If zero, assume use of the Amount attribute (Amount or Percent must be a zero value).
@Amount	1	A monetary amount.
@Code	0..1	Code identifying the fee (e.g., agency fee, municipality fee). Refer to OpenTravel Code List Fee Tax Type (FTT).
HTNG_HotelFolioNotifRQ / Folios / Folio / RevenueDetails / RevenueDetail / ExtendedPrice / Taxes / Tax / TaxDescription	1	The tax description item.
@Name	1	The line item detail description for this tax posting.
HTNG_HotelFolioNotifRQ / Folios / Folio / RevenueDetails / RevenueDetail / RevenueDetailItems	0..1	A collection of backing details.
HTNG_HotelFolioNotifRQ / Folios / Folio / RevenueDetails / RevenueDetail / RevenueDetailItems / RevenueDetailItem	1..n	Backing details.
@ReferenceID	0..1	The unique transaction identifier for this posting.
@TransactionDate	1	The date the transaction was posted.
@PMSRevenueCode	0..1	The transaction code assigned by the PMS.
@RevenueCategoryCode	0..1	Describes the type of revenue generated. Refer to OpenTravel Code List Revenue Category Code (RCC).
@CurrencyCode	0..1	The code specifying a monetary unit. Use ISO 4217, three alpha code.

Element @Attribute	Num	Description/Contents
@Amount	1	A monetary amount.
@Description	1	The line item detail description for this posting.
@DecimalPlaces	1	Indicates the number of decimal places for a particular currency. This is equivalent to the ISO 4217 standard "minor unit". Typically used when the amount provided includes the minor unit of currency without a decimal point (e.g., USD 8500 needs DecimalPlaces="2" to represent \$85).
@GuestViewable		When true, the line item may be shown to the consumer. When false, the line item must not be shown to the consumer.
HTNG_HotelFolioNotifRQ / Folios / Folio / RevenueDetails / RevenueDetail / RevenueDetailItems / RevenueDetailItem / FolioIDs	1	This element is no implemented in the Kiosk messaging, but the OpenTravel schema requires its use. Only a single child FolioID is needed in order to fulfill the schema requirement.
HTNG_HotelFolioNotifRQ / Folios / Folio / RevenueDetails / RevenueDetail / RevenueDetailItems / RevenueDetailItem / FolioIDs / FolioID	1	Even though this value is not used in the Kiosk messaging, its value should match the value of \\HTNG_HotelFolioNotifRS\Folios\Folio@FolioID.
HTNG_HotelFolioNotifRQ / Folios / Folio / RevenueDetails / RevenueDetail / RevenueDetailItems / RevenueDetailItem / UnitPrice	0..1	The unit amount charged for the service including additional amounts and fees.
@AmountBeforeTax	0..1	The unit amount not including any associated tax (e.g., sales tax, VAT, GST or any associated tax).
@AmountAfterTax	0..1	The unit amount including all associated taxes (e.g., sales tax, VAT, GST or any associated tax).
HTNG_HotelFolioNotifRQ / Folios / Folio / RevenueDetails / RevenueDetail / RevenueDetailItems / RevenueDetailItem / UnitPrice / Taxes	0..1	A collection of taxes.

Element @Attribute	Num	Description/Contents
HTNG_HotelFolioNotifRQ / Folios / Folio / RevenueDetails / RevenueDetail / RevenueDetailItems / RevenueDetailItem / UnitPrice / Taxes / Tax	1..n	Applicable tax element. This element allows for both percentages and flat amounts. If one field is used, the other should be zero since logically, taxes should be calculated in only one of the two ways.
@Type	0..1	Used to indicate if the amount is inclusive or exclusive of other charges, such as taxes, or is cumulative (amounts have been added to each other).
@Percent	0..1	Fee percentage; if zero, assume use of the Amount attribute (Amount or Percent must be a zero value).
@Amount	1	A monetary amount.
@Code	0..1	Code identifying the fee (e.g., agency fee, municipality fee). Refer to OpenTravel Code List Fee Tax Type (FTT).
HTNG_HotelFolioNotifRQ / Folios / Folio / RevenueDetails / RevenueDetail / RevenueDetailItems / RevenueDetailItem / UnitPrice / Taxes / Tax / TaxDescription	1	The tax description item.
@Name	1	The line item detail description for this tax posting.
HTNG_HotelFolioNotifRQ / Folios / Folio / RevenueDetails / RevenueDetail / RevenueDetailItems / RevenueDetailItem / ExtendedPrice	0..1	The total amount charged for the service including additional amounts and fees.
@AmountBeforeTax	0..1	The unit amount not including any associated tax (e.g., sales tax, VAT, GST or any associated tax).
@AmountAfterTax	0..1	The unit amount including all associated taxes (e.g., sales tax, VAT, GST or any associated tax).
@Quantity	1	The number of items purchased.
HTNG_HotelFolioNotifRQ / Folios / Folio / RevenueDetails /	0..1	A collection of taxes.

Element @Attribute	Num	Description/Contents
RevenueDetail / RevenueDetailItems / RevenueDetailItem / ExtendedPrice / Taxes		
HTNG_HotelFolioNotifRQ / Folios / Folio / RevenueDetails / RevenueDetail / RevenueDetailItems / RevenueDetailItem / ExtendedPrice / Taxes / Tax	1..n	Applicable tax element. This element allows for both percentages and flat amounts. If one field is used, the other should be zero since logically, taxes should be calculated in only one of the two ways.
@Type	0..1	Used to indicate if the amount is inclusive or exclusive of other charges, such as taxes, or is cumulative (amounts have been added to each other).
@Percent	0..1	Fee percentage. If zero, assume use of the Amount attribute (Amount or Percent must be a zero value).
@Amount	1	A monetary amount.
@Code	0..1	Code identifying the fee (e.g., agency fee, municipality fee). Refer to OpenTravel Code List Fee Tax Type (FTT).
HTNG_HotelFolioNotifRQ / Folios / Folio / RevenueDetails / RevenueDetail / RevenueDetailItems / RevenueDetailItem / ExtendedPrice / Taxes / Tax / TaxDescription	1	The tax description item.
@Name	1	The line item detail description for this tax posting.

4.1.2 Data Element Table – Response

Element @Attribute	Num	Description/Contents
HTNG_HotelFolioNotifRS	1	Root element of the message.
@EchoToken	1	A reference for additional message identification, assigned by the requesting host system. When a request message includes an echo token, the corresponding response message MUST include an echo token with an identical value.

Element @Attribute	Num	Description/Contents
@TimeStamp	1	Indicates the creation date and time of the message in UTC using the following format specified by ISO 8601; YYYY-MM-DDThh:mm:ssZ with time values using the 24-hour clock (e.g., 20 November 2003, 1:59:38 pm UTC becomes 2003-11-20T13:59:38Z).
@Version	1	For all OpenTravel versioned messages, the version of the message is indicated by a decimal value.
@Target	0..1	Used to indicate whether the request is for the Test or Production system.
HTNG_HotelFolioNotifRS / Success	0..1	The presence of the empty Success element explicitly indicates that the OpenTravel versioned message succeeded.
HTNG_HotelFolioNotifRS / Warnings	0..1	Used in conjunction with the Success element to define one or more business errors.
HTNG_HotelFolioNotifRS / Warnings / Warning	1..n	Used when a message has been successfully processed to report any warnings or business errors that occurred.
@Type	1	The Warning element MUST contain the Type attribute that uses a recommended set of values to indicate the warning type. The validating XSD can expect to accept values that it has NOT been explicitly coded for and process them by using Type = "Unknown". Refer to OpenTravel Code List Error Warning Type (EWT).
@Status	0..1	If present, recommended values are those enumerated in the OTA_ErrorRS, (NotProcessed Incomplete Complete Unknown) however, the data type is designated as string data, recognizing that trading partners may identify additional status conditions not included in the enumeration.
@ShortText	1	An abbreviated version of the error in textual format.
@Code	0..1	If present, this refers to a table of coded values exchanged between applications to identify errors or warnings. Refer to OpenTravel Code List Error Codes (ERR).

4.1.3 Global Sample Message – Request

```

<HTNG_HotelFolioNotifRQ EchoToken="e23a0dab-9a03-4ab6-8c8e-7b9cb68fdf2d" TimeStamp="2010-02-
12T12:26:47" Version="1.0" xmlns="http://htng.org/2012A"
xmlns:ota="http://www.opentravel.org/OTA/2003/05">
  <POS>
    <Source TerminalID="TRM123">
      <RequestorID Type="18" ID="KSKSYS123"/>
    </Source>
  </POS>
  <UniqueID Type="14" ID="RES123456"/>
  <Folios>
    <Folio GuestPayable="true" FolioID="409951013456" InvoiceID="40994101340"
    FolioGroupingID="a" GuestViewable="true" FolioType="Incidental">
      <BasicPropertyInfo ChainCode="HotelChain" BrandCode="HotelBrand"
      HotelCode="SampleHotel"/>
      <CustomerProfile ProfileType="1">
        <ota:Customer>
          <ota:PersonName>
            <ota:NamePrefix>Ms</ota:NamePrefix>
            <ota:GivenName>Annette</ota:GivenName>
            <ota:MiddleName>M</ota:MiddleName>
            <ota:Surname>Funicello</ota:Surname>
          </ota:PersonName>
          <ota:Address>
            <ota:AddressLine>145 Mouse Lane</ota:AddressLine>
            <ota:CityName>Beach Place</ota:CityName>
            <ota:PostalCode>99999</ota:PostalCode>
            <ota:StateProv StateCode="CA"></ota:StateProv>
            <ota:CountryName Code="US"></ota:CountryName>
          </ota:Address>
        </ota:Customer>
      </CustomerProfile>
      <PayerProfile>
        <ota:Customer>
          <ota:PersonName>
            <ota:NamePrefix>Ms</ota:NamePrefix>
            <ota:GivenName>Annette</ota:GivenName>
            <ota:MiddleName>M</ota:MiddleName>
            <ota:Surname>Funicello</ota:Surname>
          </ota:PersonName>
          <ota:Address>
            <ota:AddressLine>145 Mouse Lane</ota:AddressLine>
            <ota:CityName>Beach Place</ota:CityName>
            <ota:PostalCode>99999</ota:PostalCode>
            <ota:StateProv StateCode="CA"></ota:StateProv>
            <ota:CountryName Code="US"></ota:CountryName>
          </ota:Address>
        </ota:Customer>
      </PayerProfile>
      <RoomStayInformation RoomStayStatus="Reserved">
        <ota:RoomTypes>
          <ota:RoomType RoomCategory="View" RoomTypeCode="Dlx"
          RoomID="4001" RoomType="King" IsRoom="true">
            <ota:RoomDescription Name="View King"/>
          </ota:RoomType>
        </ota:RoomTypes>
        <ota:RatePlans>
          <ota:RatePlan RatePlanCode="PREV" RatePlanName="Prevailing
          Rate"/>
        </ota:RatePlans>
        <ota:GuestCounts>
          <ota:GuestCount AgeQualifyingCode="10" Count="1"/>
        </ota:GuestCounts>
        <ota:TimeSpan End="1967-08-13" Start="1967-08-13"/>
      </RoomStayInformation>
      <RevenueSummary>
        <ota:GrossAmount Amount="1101.12"/>
        <ota:TaxItems Amount="110.00"/>
        <ota:BalanceDueAmount Amount="0"/>
        <ota:AmountReceived Amount="1101.12"/>
      </RevenueSummary>
      <RevenueDetails>
        <RevenueDetail ReferenceID="401001001100" RatePlanCode="PREV"
        TransactionDate="1967-08-13" PMSRevenueCode="ROM" RevenueCategoryCode="9" Amount="100.00"
        Description="Room and Tax" GuestViewable="false">
          <ota:FolioIDs>
            <ota:FolioID>401011001201</ota:FolioID>
          </ota:FolioIDs>
          <ExtendedPrice AmountBeforeTax="1.123" Quantity="1">

```

```

Code="0"/>
<ota:Taxes Amount="1.123">
  <ota:Tax Type="Inclusive" Amount="1.123"
    </ota:Taxes>
  </ExtendedPrice>
  <RevenueDetailItems>
    <RevenueDetailItem ReferenceID="401011091001"
      RatePlanCode="PREV" TransactionDate="1967-08-13" PMSRevenueCode="STK" RevenueCategoryCode="9"
      Amount="800.00" Description="a" GuestViewable="false">
        <ota:FolioIDs>
          <ota:FolioID>401011001201</ota:FolioID>
        </ota:FolioIDs>
        <ExtendedPrice AmountBeforeTax="720.00"
          <ota:Taxes Amount="80.00">
            <ota:Tax Type="Inclusive"
              </ota:Taxes>
            </ExtendedPrice>
            <RevenueDetailItemDetails>
              <RevenueDetailItemDetail
                ReferenceID="401001099000" RatePlanCode="PREV" TransactionDate="1967-08-13" PMSRevenueCode="BAR"
                RevenueCategoryCode="9" Amount="100.00" Description="a" GuestViewable="false">
                  <ota:FolioIDs>
                    <ota:FolioID>401011001201</ota:FolioID>
                  </ota:FolioIDs>
                  <ExtendedPrice
                    AmountBeforeTax="90.00" Quantity="1">
                      <ota:Taxes
                        Amount="10.99">
                          <ota:Tax
                            Type="Inclusive" Amount="10.00" Code="7"/>
                          </ota:Taxes>
                        </ExtendedPrice>
                      </RevenueDetailItemDetail>
                    </RevenueDetailItemDetails>
                  </RevenueDetailItem>
                </RevenueDetailItems>
              </RevenueDetail>
            </RevenueDetails>
          </Folios>
        </HTNG_HotelFolioNotifRQ>

```

4.1.4 Global Sample Message – Response

```

<HTNG_HotelFolioNotifRS EchoToken="e23a0dab-9a03-4ab6-8c8e-7b9cb68fdf2d" TimeStamp="2010-02-
12T12:26:53" Version="1.0" xmlns="http://htng.org/2012A"
xmlns:ota="http://www.opentravel.org/OTA/2003/05">
  <Success/>
  <warnings>
    <ota:Warning Type="0" Status="a" ShortText="a" Code="0">String</ota:Warning>
  </warnings>
</HTNG_HotelFolioNotifRS>

```

4.2 Pull

4.2.1 Data Element Table – Request

Element @Attribute	Num	Description/Contents
HTNG_HotelFolioRQ	1	Root element of the message.
@EchoToken	1	A reference for additional message identification, assigned by the requesting host system. When a request message includes an echo token, the corresponding response message MUST include an echo token with an identical value.
@TimeStamp	1	Indicates the creation date and time of the message in UTC using the following format specified by ISO 8601; YYYY-MM-DDThh:mm:ssZ

Element @Attribute	Num	Description/Contents
		with time values using the 24-hour clock (e.g., 20 November 2003, 1:59:38 pm UTC becomes 2003-11-20T13:59:38Z).
@Version	1	For all OpenTravel versioned messages, the version of the message is indicated by a decimal value.
HTNG_HotelFolioRQ / POS / Source	1	This holds details regarding the requestor. It may be repeated to also accommodate the delivery systems.
@TerminalID	0..1	This is the electronic address of the device from which information is entered.
HTNG_HotelFolioRQ / POS / Source / RequestorID	1	An identifier of the entity making the request (e.g., ATA/IATA/ID number, Electronic Reservation Service Provider (ERSP), Association of British Travel Agents (ABTA)).
@Type	0..1	A reference to the type of object defined by the UniqueID element. Refer to OpenTravel Code List Unique ID Type (UIT).
@ID_Context	0..1	Used to identify the source of the identifier (e.g., IATA, ABTA).
@ID	1	A unique identifying value assigned by the creating system. The ID attribute may be used to reference a primary-key value within a database or in a particular implementation.
HTNG_HotelFolioRQ / UniqueID	1	An identifier used to uniquely reference an object in a system (e.g., an airline reservation reference, customer profile reference, booking confirmation number, or a reference to a previous availability quote).
@Type	1	A reference to the type of object defined by the UniqueID element. Refer to OpenTravel Code List Unique ID Type (UIT).
@ID_Context	0..1	Used to identify the source of the identifier (e.g., IATA, ABTA).
@ID	1	A unique identifying value assigned by the creating system. The ID attribute may be used to reference a primary-key value within a database or in a particular implementation.

4.2.2 Data Element Table – Response

Element @Attribute	Num	Description/Contents
HTNG_HotelFolioRS	1	Root element of the message.
@EchoToken	1	A reference for additional message identification, assigned by the requesting host system. When a request message includes an echo token, the corresponding response message MUST include an echo token with an identical value.
@TimeStamp	1	Indicates the creation date and time of the message in UTC using the following format specified by ISO 8601; YYYY-MM-DDThh:mm:ssZ with time values using the 24-hour clock (e.g., 20 November 2003, 1:59:38 pm UTC becomes 2003-11-20T13:59:38Z).
@Version	1	For all OpenTravel versioned messages, the version of the message is indicated by a decimal value.
@Target	0..1	Used to indicate whether the request is for the Test or Production system.
HTNG_HotelFolioRS / Success	0..1	The presence of the empty Success element explicitly indicates that the OpenTravel versioned message succeeded.
HTNG_HotelFolioRS / Warnings	0..1	Used in conjunction with the Success element to define one or more business errors.
HTNG_HotelFolioRS / Warnings / Warning	1..n	Used when a message has been successfully processed to report any warnings or business errors that occurred.
@Type	1	The Warning element MUST contain the Type attribute that uses a recommended set of values to indicate the warning type. The validating XSD can expect to accept values that it has NOT been explicitly coded for and process them by using Type = "Unknown". Refer to OpenTravel Code List Error Warning Type (EWT).
@Status	0..1	If present, recommended values are those enumerated in the OTA_ErrorRS, (NotProcessed Incomplete Complete Unknown) however, the data type is designated as string data, recognizing that trading partners may identify additional status conditions not included in the enumeration.

Element @Attribute	Num	Description/Contents
@ShortText	1	An abbreviated version of the error in textual format.
@Code	0..1	If present, this refers to a table of coded values exchanged between applications to identify errors or warnings. Refer to OpenTravel Code List Error Codes (ERR).
HTNG_HotelFolioRS / UniqueID	1	An identifier used to uniquely reference an object in a system (e.g., an airline reservation reference, customer profile reference, booking confirmation number, or a reference to a previous availability quote).
@Type	1	A reference to the type of object defined by the UniqueID element. Refer to OpenTravel Code List Unique ID Type (UIT).
@ID_Context	0..1	Used to identify the source of the identifier (e.g., IATA, ABTA).
@ID	1	A unique identifying value assigned by the creating system. The ID attribute may be used to reference a primary-key value within a database or in a particular implementation.
HTNG_HotelFolioRS / Folios	0..1	A collection of folios.
HTNG_HotelFolioRS / Folios / Folio	1..n	An individual folio of charges.
@GuestPayable	1	When true, the guest may provide payment for the folio. When false, the guest may not provide payment for the folio.
@FolioID	1	Unique PMS identifier if a given folio.
@InvoiceID	0..1	
@FolioGroupingID	0..1	For folios with a FolioType of "Guest" this differentiates them. This provides flexibility to group incidental charges, room charges, or any other logical grouping.
@GuestViewable	1	When true, the comment may be shown to the consumer. When false, the comment may not be shown to the consumer.
@FolioType	1	An enumeration of the following values: Group, Corporate, Wholesaler, Comp Accounting, Guest, Package, Other.

Element @Attribute	Num	Description/Contents
HTNG_HotelFolioRS / Folios / Folio / BasicPropertyInfo	0..1	An abbreviated short summary of hotel descriptive information.
@HotelName	0..1	A text field used to communicate the proper name of the hotel.
@HotelCode	0..1	The code that uniquely identifies a single hotel property. The hotel code is decided between vendors.
@HotelCodeContext	0..1	A text field used to communicate the context (or source of – i.e., Sabre, Galileo, Worldspan, Amadeus) the HotelReferenceGroup codes.
@ChainCode	0..1	
@BrandCode	0..1	
HTNG_HotelFolioRS / Folios / Folio / BasicPropertyInfo / Address / AddressLine	0..5	When the address is unformatted (FormattedInd="false") these lines will contain free form address details. When the address is formatted and street number and street name must be sent independently, the street number will be sent using StreetNmbr, and the street name will be sent in the first AddressLine occurrence.
HTNG_HotelFolioRS / Folios / Folio / BasicPropertyInfo / Address / CityName	0..1	City (e.g., Dublin), town, or postal station (i.e., a postal service territory, often used in a military address).
HTNG_HotelFolioRS / Folios / Folio / BasicPropertyInfo / Address / PostalCode	0..1	Post Office Code number.
HTNG_HotelFolioRS / Folios / Folio / BasicPropertyInfo / Address / StateProv	0..1	State or Province name (e.g., Texas).
@StateCode	0..1	The standard code or abbreviation for the state, province, or region.
HTNG_HotelFolioRS / Folios / Folio / BasicPropertyInfo / Address / CountryName	0..1	Country name (e.g., Ireland).
@Code	0..1	ISO 3166 code for a country.
HTNG_HotelFolioRS / Folios / Folio / BasicPropertyInfo /	0..1	Contact numbers of the hotel property. Examples are telephone and fax numbers.

Element @Attribute	Num	Description/Contents
ContactNumbers / ContactNumber		
@PhoneNumber	0..1	Telephone number assigned to a single location.
@CountryAccessCode	0..1	Code assigned by telecommunications authorities for international country access identifier.
@AreaCityCode	0..1	Code assigned for telephones in a specific region, city, or area.
HTNG_HotelFolioRS / Folios / Folio / CustomerProfile	1	The profile for the customer incurring the charges.
@ProfileType	1	Code to specify a profile such as Customer, Tour Operator, Corporation, etc. Refer to OpenTravel Code List Profile Type (PRT).
HTNG_HotelFolioRS / Folios / Folio / CustomerProfile / Customer / PersonName / GivenName	0..1	Given name, first name or names.
HTNG_HotelFolioRS / Folios / Folio / CustomerProfile / Customer / PersonName / MiddleName	0..1	The middle name of the person name
HTNG_HotelFolioRS / Folios / Folio / CustomerProfile / Customer / PersonName / Surname	0..1	Family name, last name.
HTNG_HotelFolioRS / Folios / Folio / CustomerProfile / Customer / PersonName / NameSuffix	0..1	Hold various name suffixes and letters (e.g., Jr., Sr., III, Ret., Esq.).
HTNG_HotelFolioRS / Folios / Folio / CustomerProfile / Customer / PersonName / NameTitle	0..1	Degree or honors (e.g., Ph.D., M.D.).
HTNG_HotelFolioRS / Folios / Folio / CustomerProfile / Customer / Address / AddressLine	0..1	When the address is unformatted (FormattedInd="false") these lines will contain free form address details. When the address is formatted and street number and street name must be sent independently, the street number

Element @Attribute	Num	Description/Contents
		will be sent using StreetNmbr, and the street name will be sent in the first AddressLine occurrence.
HTNG_HotelFolioRS / Folios / Folio / CustomerProfile / Customer / Address / CityName	0..1	City (e.g., Dublin), town, or postal station (i.e., a postal service territory, often used in a military address).
HTNG_HotelFolioRS / Folios / Folio / CustomerProfile / Customer / Address / PostalCode	0..1	Post Office Code number.
HTNG_HotelFolioRS / Folios / Folio / CustomerProfile / Customer / Address / StateProv	0..1	State or Province name (e.g., Texas).
@StateCode	0..1	The standard code or abbreviation for the state, province, or region.
HTNG_HotelFolioRS / Folios / Folio / CustomerProfile / Customer / Address / CountryName	0..1	Country name (e.g., Ireland).
@Code	0..1	A two character country code as defined in ISO3166.
HTNG_HotelFolioRS / Folios / Folio / CustomerProfile / CompanyInfo / CompanyName	1	Identifies a company by name.
@CodeContext	0..1	Identifies the context of the identifying code, such as DUNS, IATA or internal code, etc.
@CompanyShortName	0..1	Used to provide the company common name.
@Code	1	Identifies a company by the company code.
HTNG_HotelFolioRS / Folios / Folio / CustomerProfile / CompanyInfo / AddressInfo / AddressLine	0..5	When the address is unformatted (FormattedInd="false") these lines will contain free form address details. When the address is formatted and street number and street name must be sent independently, the street number will be sent using StreetNmbr, and the street name will be sent in the first AddressLine occurrence.
HTNG_HotelFolioRS / Folios /	0..1	City (e.g., Dublin), town, or postal station (i.e., a

Element @Attribute	Num	Description/Contents
Folio / CustomerProfile / CompanyInfo / AddressInfo / CityName		postal service territory, often used in a military address).
HTNG_HotelFolioRS / Folios / Folio / CustomerProfile / CompanyInfo / AddressInfo / PostalCode	0..1	Post Office Code number.
HTNG_HotelFolioRS / Folios / Folio / CustomerProfile / CompanyInfo / AddressInfo / StateProv	0..1	State or Province name (e.g., Texas).
@StateCode	0..1	The standard code or abbreviation for the state, province, or region.
HTNG_HotelFolioRS / Folios / Folio / CustomerProfile / CompanyInfo / AddressInfo / CountryName	0..1	The name or code of a country (e.g., as used in an address or to specify citizenship of a traveler).
@Code	0..1	A two character country code as defined in ISO3166.
HTNG_HotelFolioRS / Folios / Folio / PayerProfile	0..1	The profile for the entity with financial responsibility for the charges incurred.
@ProfileType	1	Code to specify a profile such as Customer, Tour Operator, Corporation, etc. Refer to OpenTravel Code List Profile Type (PRT).
HTNG_HotelFolioRS / Folios / Folio / PayerProfile / Customer / PersonName / GivenName	0..1	Given name, first name or names.
HTNG_HotelFolioRS / Folios / Folio / PayerProfile / Customer / PersonName / MiddleName	0..1	The middle name of the person name
HTNG_HotelFolioRS / Folios / Folio / PayerProfile / Customer / PersonName / Surname	0..1	Family name, last name.
HTNG_HotelFolioRS / Folios / Folio / PayerProfile / Customer / PersonName / NameSuffix	0..1	Hold various name suffixes and letters (e.g., Jr., Sr., III, Ret., Esq.).

Element @Attribute	Num	Description/Contents
HTNG_HotelFolioRS / Folios / Folio / PayerProfile / Customer / PersonName / NameTitle	0..1	Degree or honors (e.g., Ph.D., M.D.).
HTNG_HotelFolioRS / Folios / Folio / PayerProfile / Customer / Address / AddressLine	0..5	When the address is unformatted (FormattedInd="false") these lines will contain free form address details. When the address is formatted and street number and street name must be sent independently, the street number will be sent using StreetNmbr, and the street name will be sent in the first AddressLine occurrence.
HTNG_HotelFolioRS / Folios / Folio / PayerProfile / Customer / Address / CityName	0..1	City (e.g., Dublin), town, or postal station (i.e., a postal service territory, often used in a military address).
HTNG_HotelFolioRS / Folios / Folio / PayerProfile / Customer / Address / PostalCode	0..1	Post Office Code number.
HTNG_HotelFolioRS / Folios / Folio / PayerProfile / Customer / Address / StateProv	0..1	State or Province name (e.g., Texas).
@StateCode	0..1	The standard code or abbreviation for the state, province, or region.
HTNG_HotelFolioRS / Folios / Folio / PayerProfile / Customer / Address / CountryName	0..1	Country name (e.g., Ireland).
@Code	0..1	A two character country code as defined in ISO3166.
HTNG_HotelFolioRS / Folios / Folio / PayerProfile / CompanyInfo / CompanyName	0..1	Identifies a company by name.
@CodeContext	0..1	Identifies the context of the identifying code, such as DUNS, IATA or internal code, etc.
@CompanyShortName	0..1	Used to provide the company common name.
@Code	0..1	Identifies a company by the company code.
HTNG_HotelFolioRS / Folios / Folio / PayerProfile / CompanyInfo / AddressInfo /	0..5	When the address is unformatted (FormattedInd="false") these lines will contain free form address details. When the address is

Element @Attribute	Num	Description/Contents
AddressLine		formatted and street number and street name must be sent independently, the street number will be sent using StreetNmbr, and the street name will be sent in the first AddressLine occurrence.
HTNG_HotelFolioRS / Folios / Folio / PayerProfile / CompanyInfo / AddressInfo / CityName	0..1	City (e.g., Dublin), town, or postal station (i.e., a postal service territory, often used in a military address).
HTNG_HotelFolioRS / Folios / Folio / PayerProfile / CompanyInfo / AddressInfo / PostalCode	0..1	Post Office Code number.
HTNG_HotelFolioRS / Folios / Folio / PayerProfile / CompanyInfo / AddressInfo / StateProv	0..1	State or Province name (e.g., Texas).
@StateCode	0..1	The standard code or abbreviation for the state, province, or region.
HTNG_HotelFolioRS / Folios / Folio / PayerProfile / CompanyInfo / AddressInfo / CountryName	0..1	The name or code of a country (e.g., as used in an address or to specify citizenship of a traveler).
@Code	0..1	A 2 character country code as defined in ISO3166.
HTNG_HotelFolioRS / Folios / Folio / RoomStayInformation	0..1	
@RoomStayStatus	0..1	Identifies the status of the room stay.
HTNG_HotelFolioRS / Folios / Folio / RoomStayInformation / RoomTypes	0..1	A collection of Room Types associated with a particular Room Stay.
HTNG_HotelFolioRS / Folios / Folio / RoomStayInformation / RoomTypes / RoomType	1..n	Room type details.
@RoomCategory	0..1	Indicates the category of the room. Typical values would be Moderate, Standard, or Deluxe. Refer to OpenTravel Code List Segment Category Code

Element @Attribute	Num	Description/Contents
		(SEG).
@RoomTypeCode	0..1	Specific system room type code, ex: A1K, A1Q etc.
@RoomID	0..1	A string value representing the unique identification of a room if the request is looking for a specific room.
@RoomType	0..1	(Formerly, RoomInventoryCode) A code value that indicates the type of room for which this request is made, e.g.: double, king, etc. Values may use the Hotel Descriptive Content table or a codes specific to the property or hotel brand.
@IsRoom	0..1	Indicates the room is a sleeping room when true.
HTNG_HotelFolioRS / Folios / Folio / RoomStayInformation / RatePlans	0..1	A collection of Rate Plans associated with a particular Room Stay.
HTNG_HotelFolioRS / Folios / Folio / RoomStayInformation / RatePlans / RatePlan	1..n	Rate plan details.
@RatePlanCode	0..1	The RatePlanCode assigned by the receiving system for the inventory item in response to a new rate plan notification. (Implementation Notes: This would only be returned when the notification is of type New and the sender is translating RatePlanCode values. On subsequent transactions for this rate plan, the sender would populate the RatePlanCode attribute with this value returned by the receiver.)
@RatePlanName	0..1	Provides the name of the rate plan or group. Typically used with RatePlanType to further describe the rate plan.
HTNG_HotelFolioRS / Folios / Folio / RoomStayInformation / GuestCounts	0..1	A collection of Guest Counts associated with Room Stay. A child Guest Count element is required for each distinct age group.
HTNG_HotelFolioRS / Folios / Folio / RoomStayInformation / GuestCounts / GuestCount	1..9 9	A recurring element that identifies the number of guests and ages of the guests.
@AgeQualifyingCode	0..1	A code representing a business rule that determines the charges for a guest based upon

Element @Attribute	Num	Description/Contents
		age range (e.g. Adult, Child, Senior, Child With Adult, Child Without Adult). This attribute allows for an increase in rate by occupant class. Refer to OpenTravel Code List Age Qualifying Code (AQC).
@Count	0..1	The number of guests in one AgeQualifyingCode or Count.
HTNG_HotelFolioRS / Folios / Folio / RoomStayInformation / TimeSpan	0..1	The Time Span which covers the Room Stay.
@Start	0..1	The starting value of the time span. For instance, the arrival date.
@End	0..1	The ending value of the time span. For instance, the departure date.
HTNG_HotelFolioRS / Folios / Folio / RevenueSummary / GrossAmount	0..1	The total booking cost to the customer.
@Amount	1	A monetary amount.
HTNG_HotelFolioRS / Folios / Folio / RevenueSummary / TaxItems	0..1	The total taxes charged to the customer.
@Amount	1	A monetary amount.
HTNG_HotelFolioRS / Folios / Folio / RevenueSummary / BalanceDueAmount	1	The amount remaining to be paid by the customer, i.e., GrossAmount less the greater of DepositAmount and Amount Received.
@Amount	1	A monetary amount.
HTNG_HotelFolioRS / Folios / Folio / RevenueSummary / AmountReceived	0..1	The payment amount received against the reservation.
@Amount	1	A monetary amount.
HTNG_HotelFolioRS / Folios / Folio / RevenueDetails	1	A collection of line items
HTNG_HotelFolioRS / Folios / Folio / RevenueDetails / RevenueDetail	1..n	The line item detail of specific revenue transactions.
@ReferenceID	0..1	The unique transaction identifier for this posting.

Element @Attribute	Num	Description/Contents
@TransactionDate	1	The date the transaction was posted.
@PMSRevenueCode	0..1	The transaction code assigned by the PMS.
@RevenueCategoryCode	0..1	Describes the type of revenue generated. Refer to OpenTravel Code List Revenue Category Code (RCC).
@CurrencyCode	0..1	The code specifying a monetary unit. Use ISO 4217, three alpha code.
@Amount	1	A monetary amount.
@Description	1	The line item detail description for this posting.
@DecimalPlaces	1	Indicates the number of decimal places for a particular currency. This is equivalent to the ISO 4217 standard "minor unit". Typically used when the amount provided includes the minor unit of currency without a decimal point (e.g., USD 8500 needs DecimalPlaces="2" to represent \$85).
@GuestViewable		When true, the line item may be shown to the consumer. When false, the line item must not be shown to the consumer.
HTNG_HotelFolioRS / Folios / Folio / RevenueDetails / RevenueDetail / FolioIDs	1	This element is not implemented in the Kiosk messaging, but the OpenTravel schema requires its use. Only a single child FolioID is needed in order fulfill the schema requirement.
HTNG_HotelFolioRS / Folios / Folio / RevenueDetails / RevenueDetail / FolioIDs / FolioID	1	Even though this value is not used in the Kiosk messaging, it's value should match the value of \\HTNG_HotelFolioRQ\Folios\Folio@FolioID.
HTNG_HotelFolioRS / Folios / Folio / RevenueDetails / RevenueDetail / UnitPrice	0..1	The unit amount charged for the service including additional amounts and fees.
@AmountBeforeTax	0..1	The unit amount not including any associated tax (e.g., sales tax, VAT, GST or any associated tax).
@AmountAfterTax	0..1	The unit amount including all associated taxes (e.g., sales tax, VAT, GST or any associated tax).
HTNG_HotelFolioRS / Folios / Folio / RevenueDetails / RevenueDetail / UnitPrice / Taxes	0..1	A collection of taxes.

Element @Attribute	Num	Description/Contents
HTNG_HotelFolioRS / Folios / Folio / RevenueDetails / RevenueDetail / UnitPrice / Taxes / Tax	1..n	Applicable tax element. This element allows for both percentages and flat amounts. If one field is used, the other should be zero since logically, taxes should be calculated in only one of the two ways.
@Type	0..1	Used to indicate if the amount is inclusive or exclusive of other charges, such as taxes, or is cumulative (amounts have been added to each other).
@Percent	0..1	Fee percentage; if zero, assume use of the Amount attribute (Amount or Percent must be a zero value).
@Amount	1	A monetary amount.
@Code	0..1	Code identifying the fee (e.g., agency fee, municipality fee). Refer to OpenTravel Code List Fee Tax Type (FTT).
HTNG_HotelFolioRS / Folios / Folio / RevenueDetails / RevenueDetail / UnitPrice / Taxes / Tax / TaxDescription	1	The tax description item.
@Name	1	The line item detail description for this tax posting.
HTNG_HotelFolioRS / Folios / Folio / RevenueDetails / RevenueDetail / ExtendedPrice	0..1	The total amount charged for the service including additional amounts and fees.
@AmountBeforeTax	0..1	The unit amount not including any associated tax (e.g., sales tax, VAT, GST or any associated tax).
@AmountAfterTax	0..1	The unit amount including all associated taxes (e.g., sales tax, VAT, GST or any associated tax).
@Quantity	1	The number of items purchased.
HTNG_HotelFolioRS / Folios / Folio / RevenueDetails / RevenueDetail / ExtendedPrice / Taxes	0..1	A collection of taxes.
HTNG_HotelFolioRS / Folios / Folio / RevenueDetails / RevenueDetail / ExtendedPrice / Taxes / Tax	1..n	Applicable tax element. This element allows for both percentages and flat amounts. If one field is used, the other should be zero since logically, taxes should be calculated in only one of the two

Element @Attribute	Num	Description/Contents
		ways.
@Type	0..1	Used to indicate if the amount is inclusive or exclusive of other charges, such as taxes, or is cumulative (amounts have been added to each other).
@Percent	0..1	Fee percentage. If zero, assume use of the Amount attribute (Amount or Percent must be a zero value).
@Amount	1	A monetary amount.
@Code	0..1	Code identifying the fee (e.g., agency fee, municipality fee). Refer to OpenTravel Code List Fee Tax Type (FTT).
HTNG_HotelFolioRS / Folios / Folio / RevenueDetails / RevenueDetail / ExtendedPrice / Taxes / Tax / TaxDescription	1	The tax description item.
@Name	1	The line item detail description for this tax posting.
HTNG_HotelFolioRS / Folios / Folio / RevenueDetails / RevenueDetail / RevenueDetailItems	1	A collection of backing details.
HTNG_HotelFolioRS / Folios / Folio / RevenueDetails / RevenueDetail / RevenueDetailItems / RevenueDetailItem	1..n	Backing details.
@ReferenceID	0..1	The unique transaction identifier for this posting.
@TransactionDate	1	The date the transaction was posted.
@PMSRevenueCode	0..1	The transaction code assigned by the PMS.
@RevenueCategoryCode	0..1	Describes the type of revenue generated. Refer to OpenTravel Code List Revenue Category Code (RCC).
@CurrencyCode	0..1	The code specifying a monetary unit. Use ISO 4217, three alpha code.
@Amount	1	A monetary amount.

Element @Attribute	Num	Description/Contents
@Description	1	The line item detail description for this posting.
@DecimalPlaces	1	Indicates the number of decimal places for a particular currency. This is equivalent to the ISO 4217 standard "minor unit". Typically used when the amount provided includes the minor unit of currency without a decimal point (e.g., USD 8500 needs DecimalPlaces="2" to represent \$85).
@GuestViewable		When true, the line item may be shown to the consumer. When false, the line item must not be shown to the consumer.
HTNG_HotelFolioRS / Folios / Folio / RevenueDetails / RevenueDetail / RevenueDetailItems / RevenueDetailItem / FolioIDs	1	This element is no implemented in the Kiosk messaging, but the OpenTravel schema requires its use. Only a single child FolioID is needed in order to fulfill the schema requirement.
HTNG_HotelFolioRS / Folios / Folio / RevenueDetails / RevenueDetail / RevenueDetailItems / RevenueDetailItem / FolioIDs / FolioID	1	Even though this value is not used in the Kiosk messaging, its value should match the value of \\HTNG_HotelFolioRS\Folios\Folio@FolioID.
HTNG_HotelFolioRS / Folios / Folio / RevenueDetails / RevenueDetail / RevenueDetailItems / RevenueDetailItem / UnitPrice	0..1	The unit amount charged for the service including additional amounts and fees.
@AmountBeforeTax	0..1	The unit amount not including any associated tax (e.g., sales tax, VAT, GST or any associated tax).
@AmountAfterTax	0..1	The unit amount including all associated taxes (e.g., sales tax, VAT, GST or any associated tax).
HTNG_HotelFolioRS / Folios / Folio / RevenueDetails / RevenueDetail / RevenueDetailItems / RevenueDetailItem / UnitPrice / Taxes	0..1	A collection of taxes.
HTNG_HotelFolioRS / Folios / Folio / RevenueDetails /	1..n	Applicable tax element. This element allows for both percentages and flat amounts. If one field is

Element @Attribute	Num	Description/Contents
RevenueDetail / RevenueDetailItems / RevenueDetailItem / UnitPrice / Taxes / Tax		used, the other should be zero since logically, taxes should be calculated in only one of the two ways.
@Type	0..1	Used to indicate if the amount is inclusive or exclusive of other charges, such as taxes, or is cumulative (amounts have been added to each other).
@Percent	0..1	Fee percentage; if zero, assume use of the Amount attribute (Amount or Percent must be a zero value).
@Amount	1	A monetary amount.
@Code	0..1	Code identifying the fee (e.g., agency fee, municipality fee). Refer to OpenTravel Code List Fee Tax Type (FTT).
HTNG_HotelFolioRS / Folios / Folio / RevenueDetails / RevenueDetail / RevenueDetailItems / RevenueDetailItem / UnitPrice / Taxes / Tax / TaxDescription	1	The tax description item.
@Name	1	The line item detail description for this tax posting.
HTNG_HotelFolioRS / Folios / Folio / RevenueDetails / RevenueDetail / RevenueDetailItems / RevenueDetailItem / ExtendedPrice	0..1	The total amount charged for the service including additional amounts and fees.
@AmountBeforeTax	0..1	The unit amount not including any associated tax (e.g., sales tax, VAT, GST or any associated tax).
@AmountAfterTax	0..1	The unit amount including all associated taxes (e.g., sales tax, VAT, GST or any associated tax).
@Quantity	1	The number of items purchased.
HTNG_HotelFolioRS / Folios / Folio / RevenueDetails / RevenueDetail / RevenueDetailItems /	0..1	A collection of taxes.

Element @Attribute	Num	Description/Contents
RevenueDetailItem / ExtendedPrice / Taxes		
HTNG_HotelFolioRS / Folios / Folio / RevenueDetails / RevenueDetail / RevenueDetailItems / RevenueDetailItem / ExtendedPrice / Taxes / Tax	1..n	Applicable tax element. This element allows for both percentages and flat amounts. If one field is used, the other should be zero since logically, taxes should be calculated in only one of the two ways.
@Type	0..1	Used to indicate if the amount is inclusive or exclusive of other charges, such as taxes, or is cumulative (amounts have been added to each other).
@Percent	0..1	Fee percentage. If zero, assume use of the Amount attribute (Amount or Percent must be a zero value).
@Amount	1	A monetary amount.
@Code	0..1	Code identifying the fee (e.g., agency fee, municipality fee). Refer to OpenTravel Code List Fee Tax Type (FTT).
HTNG_HotelFolioRS / Folios / Folio / RevenueDetails / RevenueDetail / RevenueDetailItems / RevenueDetailItem / ExtendedPrice / Taxes / Tax / TaxDescription	1	The tax description item.
@Name	1	The line item detail description for this tax posting.

4.2.3 Global Sample Message – Request

```
<HTNG_HotelFolioRQ EchoToken="f4a2d799-0824-4801-9264-1f8554f8d427" TimeStamp="2010-02-12T12:26:47" Version="1.0" xmlns="http://htng.org/2012A"
xmlns:ota="http://www.opentravel.org/OTA/2003/05">
  <POS>
    <Source TerminalID="TRM123">
      <RequestorID Type="18" ID="KSKSYS123"/>
    </Source>
  </POS>
  <UniqueID Type="14" ID="RES123456"/>
</HTNG_HotelFolioRQ>
```

4.2.4 Global Sample Message – Response

```

<HTNG_HotelFolioRS EchoToken="f4a2d799-0824-4801-9264-1f8554f8d427" TimeStamp="2010-02-
12T12:26:53" Version="1.0" xmlns="http://htng.org/2012A"
xmlns:ota="http://www.opentravel.org/OTA/2003/05">
  <Success/>
  <Warnings>
    <ota:Warning Type="1" Status="unknown" ShortText="unknown" Code="1">Unknown
Error</ota:Warning>
  </Warnings>
  <UniqueID Type="14" ID="RES123456"/>
  <Folios>
    <Folio GuestPayable="true" FolioID="401011001234" InvoiceID="401011001235"
FolioGroupingID="401011001200" GuestViewable="true" FolioType="Incidental">
      <BasicPropertyInfo ChainCode="HotelChain" BrandCode="HotelBrand"
HotelCode="HotelCode"/>
      <CustomerProfile ProfileType="1">
        <ota:Customer>
          <ota:PersonName>
            <ota:NamePrefix>Ms</ota:NamePrefix>
            <ota:GivenName>Annette</ota:GivenName>
            <ota:MiddleName>M</ota:MiddleName>
            <ota:Surname>Funicello</ota:Surname>
          </ota:PersonName>
          <ota:Address>
            <ota:AddressLine>123 Mouse Lane</ota:AddressLine>
            <ota:CityName>Beach Place</ota:CityName>
            <ota:PostalCode>99999</ota:PostalCode>
            <ota:StateProv StateCode="CA"></ota:StateProv>
            <ota:CountryName Code="US"></ota:CountryName>
          </ota:Address>
        </ota:Customer>
      </CustomerProfile>
      <PayerProfile>
        <ota:Customer>
          <ota:PersonName>
            <ota:NamePrefix>Mr</ota:NamePrefix>
            <ota:GivenName>Annette</ota:GivenName>
            <ota:MiddleName>M</ota:MiddleName>
            <ota:Surname>Funicello</ota:Surname>
          </ota:PersonName>
          <ota:Address>
            <ota:AddressLine>123 Mouse Lane</ota:AddressLine>
            <ota:CityName>Beach Place</ota:CityName>
            <ota:PostalCode>99999</ota:PostalCode>
            <ota:StateProv StateCode="CA"></ota:StateProv>
            <ota:CountryName Code="US"></ota:CountryName>
          </ota:Address>
        </ota:Customer>
      </PayerProfile>
      <RoomStayInformation RoomStayStatus="Reserved">
        <ota:RoomTypes>
          <ota:RoomType RoomCategory="View" RoomTypeCode="Dlx"
RoomID="4001" RoomType="King" IsRoom="true">
            <ota:RoomDescription Name="View King"/>
          </ota:RoomType>
        </ota:RoomTypes>
        <ota:RatePlans>
          <ota:RatePlan RatePlanCode="PREV" RatePlanName="PREVAIL"/>
        </ota:RatePlans>
        <ota:GuestCounts>
          <ota:GuestCount AgeQualifyingCode="10" Count="2"/>
        </ota:GuestCounts>
        <ota:TimeSpan End="1967-08-13" Start="1967-08-13"/>
      </RoomStayInformation>
      <RevenueSummary>
        <ota:GrossAmount Amount="1000.00"/>
        <ota:TaxItems Amount="100.00"/>
        <ota:BalanceDueAmount Amount="0"/>
        <ota:AmountReceived Amount="1000.00"/>
      </RevenueSummary>
      <RevenueDetails>
        <RevenueDetail ReferenceID="401001001100" RatePlanCode="PREV"
TransactionDate="1967-08-13" PMSRevenueCode="ROM" RevenueCategoryCode="9" Amount="100.00"
Description="Room and Tax" GuestViewable="false">
          <ota:FolioIDs>
            <ota:FolioID>401011001201</ota:FolioID>
          </ota:FolioIDs>
          <ExtendedPrice AmountBeforeTax="1.123" Quantity="1">
            <ota:Taxes Amount="1.123">

```

```

Code="0"/>
                                <ota:Tax Type="Inclusive" Amount="1.123"
                                </ota:Taxes>
                                </ExtendedPrice>
                                <RevenueDetailItems>
                                <RevenueDetailItem ReferenceID="401011091001"
RatePlanCode="PREV" TransactionDate="1967-08-13" PMSRevenueCode="STK" RevenueCategoryCode="9"
Amount="800.00" Description="a" GuestViewable="false">
                                <ota:FolioIDs>
                                <ota:FolioID>401011001201</ota:FolioID>
                                </ota:FolioIDs>
                                <ExtendedPrice AmountBeforeTax="720.00"
Quantity="1">
                                <ota:Taxes Amount="80.00">
                                <ota:Tax Type="Inclusive"
Amount="80.00" Code="13"/>
                                </ota:Taxes>
                                </ExtendedPrice>
                                <RevenueDetailItemDetails>
                                <RevenueDetailItemDetail
ReferenceID="401001099000" RatePlanCode="PREV" TransactionDate="1967-08-13" PMSRevenueCode="BAR"
RevenueCategoryCode="9" Amount="100.00" Description="a" GuestViewable="false">
                                <ota:FolioIDs>
                                <ota:FolioID>401011001201</ota:FolioID>
                                </ota:FolioIDs>
                                <ExtendedPrice
AmountBeforeTax="90.00" Quantity="1">
                                <ota:Taxes
Amount="10.99">
                                <ota:Tax
Type="Inclusive" Amount="10.00" Code="7"/>
                                </ota:Taxes>
                                </ExtendedPrice>
                                </RevenueDetailItemDetail>
                                </RevenueDetailItemDetails>
                                </RevenueDetailItem>
                                </RevenueDetailItems>
                                </RevenueDetail>
                                </RevenueDetails>
                                </Folio>
                                </Folios>
</HTNG_HotelFolioRS>

```

5 Appendices

5.1 Glossary of Terms

For the purpose of this document the following terms have been defined as follows:

Term	Definition
Package	A collection of components being sold at a single price, where the component prices may or may not be known to the consumer.

5.2 Implementation Notes

This spec can either be used as a standalone implementation or can be configured as an add-on for those implementers who have already written to the folio message within the [HTNG Kiosk Integration specification](#).

NOTE: If the contents of a package are transmitted in a message payload, it is the responsibility of the receiving system to honor the GuestViewable flag. If the flag is set to false, the contents of the package **MUST NOT** be displayed to the guest.

RevenueCategoryCode

Some folio producing (or consuming) systems may not wish to perform correlations for all of their transactions codes (PMSRevenueCode) due to the sheer number of transaction codes. These systems may instead provide financial information based upon the categorization of a transaction code. The RevenueCategoryCode allows for classifying transactions at a level that sits between the Transaction Code and the GL Code, aiding in the identification and aggregation of hotel charges. A value for PMSRevenueCode **MUST** always be sent, using one of the following approaches (agreed upon by trading partners):

1. Use the native OpenTravel implementation of RevenueCategoryCode.

```
<RevenueDetail ReferenceID="401001001100" RatePlanCode="BAR" TransactionDate="2012-08-13"  
PMSRevenueCode="ROOMREV" RevenueCategoryCode="9" Amount="100.00" Description="Room and  
Tax" GuestViewable="false">
```

2. Populate the PMSRevenueCode using custom revenue categories and use a RevenueCategoryCode of 6 (Other) or leave RCC blank.

```
<RevenueDetail ReferenceID="401001001100" RatePlanCode="BAR" TransactionDate="2012-08-13"  
PMSRevenueCode="RR1234" RevenueCategoryCode="6" Amount="100.00" Description="Room and  
Tax" GuestViewable="false">
```

Handling packages

If a package needs to be represented, the package container is at the RevenueDetail level and the individual components composing the package can be found inside the RevenueDetailItems collection.

Paid invoices

The producer should notify the receiver as to whether the invoice status is PAID or NOT PAID. For example, if the invoice is sent to city ledger as an AR, then it is not paid.

If all charges are consolidated in a single folio, the Folio Detail Consumer has no way of knowing whether the charges are corporate versus personal. If it is necessary to understand which charges are for business versus personal, then multiple folios must be sent. The Folio@FolioType attribute is used to differentiate the charges. A FolioType of Incidental indicates all charges belonging to this folio are personal expenses.

Service date

While it is highly desirable to know the date a service was rendered, many systems do not track this independently of the posting date and therefore, it must be assumed that the date the transaction is posted is the date the service was rendered.

RatePlanCode

The RatePlanCode can serve a dual purpose. The simplest purpose is that the RatePlanCode indicates a simple rate. The other purpose is a package containing backing detail. The way to determine the usage is whether the RevenueDetailItemDetails collection is populated; packages will always have the collection populated.

5.3 Referenced Documents

The following table shows the documents upon which this document depends:

Document Title	Location/URL
HTNG Kiosk Integration specification	http://collaboration.htng.org/specs/documents.php?action=show&dcat=34&gdid=22769
HTNG Product Distribution specifications	http://collaboration.htng.org/specs/documents.php?action=show&dcat=42&gdid=23700
HTNG Property Web Services Specification (Part One) – Web Services Framework	http://collaboration.htng.org/specs/documents.php?action=show&dcat=25&gdid=22364
OpenTravel Alliance specifications	http://www.opentravel.org/Specifications/Default.aspx