



# **HTNG Product Distribution Statistics Specification Version 3.0**

**18 April 2014**

## About HTNG

Hotel Technology Next Generation (HTNG) is a non-profit association with a mission to foster, through collaboration and partnership, the development of next-generation systems and solutions that will enable hoteliers and their technology vendors to do business globally in the 21st century; to be recognized as a leading voice of the global hotel community, articulating the technology requirements of hotel companies of all sizes to the vendor community; and to facilitate the development of technology models for hospitality that will foster innovation, improve the guest experience, increase the effectiveness and efficiency of hotels, and create a healthy ecosystem of technology suppliers.

Copyright 2014, Hotel Technology Next Generation

All rights reserved.

No part of this publication may be reproduced, stored in a retrieval system, or transmitted, in any form or by any means, electronic, mechanical, photocopying, recording, or otherwise, without the prior permission of the copyright owner.

For any software code contained within this specification, permission is hereby granted, free-of-charge, to any person obtaining a copy of this specification (the "Software"), to deal in the Software without restriction, including without limitation the rights to use, copy, modify, merge, publish, distribute, sublicense, and/or sell copies of the Software, and to permit persons to whom the Software is furnished to do so, subject to the above copyright notice and this permission notice being included in all copies or substantial portions of the Software.

Manufacturers and software providers shall not claim compliance with portions of the requirements of any HTNG specification or standard, and shall not use the HTNG name or the name of the specification or standard in any statements about their respective product(s) unless the product(s) is (are) certified as compliant to the specification or standard.

THE SOFTWARE IS PROVIDED "AS IS", WITHOUT WARRANTY OF ANY KIND, EXPRESS OR IMPLIED, INCLUDING BUT NOT LIMITED TO THE WARRANTIES OF MERCHANTABILITY, FITNESS FOR A PARTICULAR PURPOSE, AND NON-INFRINGEMENT. IN NO EVENT SHALL THE AUTHORS OR COPYRIGHT HOLDERS BE LIABLE FOR ANY CLAIM, DAMAGES, OR OTHER LIABILITY, WHETHER IN AN ACTION OF CONTRACT, TORT OR OTHERWISE, ARISING FROM, OUT OF, OR IN CONNECTION WITH THE SOFTWARE OR THE USE OR OTHER DEALINGS IN THE SOFTWARE.

Permission is granted for implementers to use the names, labels, etc. contained within the specification. The intent of publication of the specification is to encourage implementations of the specification.

This specification has not been verified for avoidance of possible third-party proprietary rights. In implementing this specification, usual procedures to ensure the respect of possible third-party intellectual property rights should be followed. Visit <http://htng.org/ip-claims> to view third-party claims that have been disclosed to HTNG. HTNG offers no opinion as to whether claims listed on this site may apply to portions of this specification.

The names Hotel Technology Next Generation and HTNG, and logos depicting these names, are trademarks of Hotel Technology Next Generation. Permission is granted for implementers to use the aforementioned names in technical documentation for the purpose of acknowledging the copyright and including the notice required above. All other use of the aforementioned names and logos requires the permission of Hotel Technology Next Generation, either in written form or as explicitly permitted for the organization's members through the current terms and conditions of membership.

# Table of contents

VERSION 3.0 .....	1
18 APRIL 2014 .....	1
<b>1 THIS SPECIFICATION AT A GLANCE.....</b>	<b>4</b>
<b>2 DOCUMENT INFORMATION .....</b>	<b>5</b>
2.1 DOCUMENT HISTORY .....	5
2.2 DOCUMENT PURPOSE .....	6
2.3 SCOPE .....	6
2.4 RELATIONSHIP TO OTHER STANDARDS.....	6
2.5 USEFUL RESOURCES.....	6
2.6 AUDIENCE.....	6
2.7 OVERVIEW .....	6
2.8 FURTHER CONSIDERATIONS.....	7
<b>3 COMPONENT SCENARIOS.....</b>	<b>8</b>
3.1 PROVIDE STATISTICS REPORT .....	10
3.1.1 Overview.....	10
3.1.2 Roles .....	10
3.1.3 Use Case .....	11
3.1.4 Message Flows.....	12
3.1.5 Provide Totals Report.....	12
3.1.6 Provide Categorized Report .....	14
3.2 REQUEST STATISTICS REPORT .....	17
3.2.1 Overview.....	17
3.2.2 Roles .....	17
3.2.3 Use Case .....	18
3.2.4 Message Flows.....	18
3.2.5 Request Statistics Report .....	18
<b>4 MESSAGES.....</b>	<b>23</b>
4.1 PROVIDE STATISTICS REPORT .....	23
4.1.1 Data Element Table .....	23
4.1.2 Data Element Table .....	28
4.2 REQUEST STATISTICS REPORT .....	28
4.2.1 Data Element Table .....	28
4.2.2 Data Element Table .....	30
<b>5 APPENDICES.....</b>	<b>36</b>
5.1 GLOSSARY OF TERMS.....	36
5.2 REFERENCED DOCUMENTS .....	36

## **1 This Specification at a Glance**

This specification details a set of core services and a schema to be used in the exchange of Statistics information between systems.

The Statistics use cases covered in this document include the following:

- Provide Statistics Report
- Request Statistics Report

## 2 Document Information

### 2.1 Document History

Version	Date	Author	Comments
1.0.0	27 July 2007	Product Distribution (PD) Workgroup	First draft posted for workgroup review
1.0.1	11 Sep 2007	PD Workgroup	Second draft to reflect change in requirements for Arrival and Departure counts
1.0.2	07 Oct 2007	PD Workgroup	Formatting
1.0.3	12 Nov 2007	PD Workgroup	Reformatted to HTNG template
1.04	26 Nov 2007	PD Workgroup	Final minor edits; up for WG approval
2.0	27 May 2010	PD Workgroup	Added the spec to the one, large Product Distribution specification
2.01	23 Sep 2013	Kylene Reese	Moved the spec into its own, standalone spec
2.02	30 Sep 2013	PD Workgroup	Updated the introductory sections, reviewed sample messages and combined some of the sub-scenarios
2.03	2 Oct 2013	Jay Rosamilia	Updated message flow diagrams and sample response messages
2.04	14 Oct 2013	PD Workgroup	Added a pull scenario
2.05	18 Oct 2013	Pierre Pedron	Updated sample messages
2.06	21 Oct 2013	PD Workgroup	Updated scenarios and sample messages
2.09	20 Oct 2013	Jay Rosamilia	Cleaned up sample push messages using OTA_HotelStatsRQ/RS for pull messages.
2.10-.12	Nov 2013	PD Workgroup	Worked on the various scenarios
2.13-15	Dec 2013	Jay Rosamilia	Updated sample messages and data element tables
2.16-.18	March 2014	PD Workgroup	Finalized sample messages
2.90	20 Mar 2014	Kylene Reese	Prepared spec for member comment period
2.99	09 Apr 2014	Kylene Reese	Prepared spec for workgroup vote
3.0	18 Apr 2014	PD Workgroup	Separated the spec from the all-inclusive Product Distribution document

## 2.2 Document Purpose

This document defines the Hotel Technology Next Generation (HTNG) scenarios and business processes for exchanging statistic messages based on OpenTravel Alliance messages. This document provides a framework for trading partners to define various attributes related to statistics to be exchanged between systems.

## 2.3 Scope

This document defines a common HTNG implementation of the OpenTravel Alliance specifications for messages related to statistics.

## 2.4 Relationship to Other Standards

This specification and its supporting schemas leverage the existing OpenTravel Alliance methodology for message construction and draws upon data definitions common to several HTNG specifications as of April 2014.

Related specifications:

- Outline of most recent versions of all HTNG Product Distribution specifications available on [workgroup's wiki page](#)
- [Open Travel Alliance Specifications](#)

## 2.5 Useful Resources

- [Implementing Web Services Using HTNG Specifications – A Quick Start Guide for Software Developers](#)
- HTNG Discussion Board – currently available at <http://www2.htng.org/discussion>
- [Error Handling Appendix](#) – This is a companion document containing mandatory and optional error codes. This document is relevant when referring to warnings or errors, which are reported in message responses.

## 2.6 Audience

This document is designed as a guide for project managers, programmers and analysts to gain detailed information needed to implement the distribution of statistical information between systems.

## 2.7 Overview

The OpenTravel Alliance messages contain a large number of optional fields, and the same information can be represented in a number of different ways.

The intent of the specification is to recommend a minimum common standard to represent complex data. The intent is also to avoid having to pass the same information in more than one field, thus avoiding confusion.

Trading partners may agree prior to implementation to use additional fields for data not covered in the scenario, including TPA extensions as per the OpenTravel Alliance schemas.

## **2.8 Further Considerations**

The scenarios outlined provide a common starting point for the definition of the messages exchanged and instructs that the implementers of these messages will:

1. Add expansions as needed to enable exchange of additional information while retaining compliance with the OpenTravel Alliance specifications.
2. Report expansions deemed common to HTNG for consideration as additional scenarios.
3. Report any missing elements or attributes to OpenTravel Alliance for inclusion in a future specification release.

### 3 Component Scenarios

Partners will be responsible for creating their own Quality Assurance Test Scripts.

The intent of the HTNG scenarios is to recommend a minimum common denominator and clarify what fields should be used to transfer the data required. The main aim is to avoid having to pass the same information in more than one field, thus avoiding confusion.

Trading partners may agree prior to implementation to use additional fields for data not covered in the scenario, including TPA extensions as per the OpenTravel Alliance specifications schema.

#### **Behavior**

The purpose of this profile is to support the transfer of summary-level data from an originating system; CRS or PMS, to a receiving system, such as a revenue management system. The data comprises property-level and segmentation/categorized-level data, for both past and future dates. The specific date ranges exchanged are subject to the agreement of the trading partners involved.

The reservation-based data is necessary in order for the revenue management system to optimize its forecasts and provide updated yield management controls either for manual or automated deployment in a receiving system such as a PMS and/or CRS, or Channel Management/Rate Distribution application. For further information on the automated revenue management controls please refer to the HTNG Product Distribution Availability specification.

To maintain integration and application integrity it is expected that the source of the data; i.e. the originating system, will be the same application used by the client for its business and financial reporting and has 100% visibility of inventory.

The scope of the message provided by the originating system; at minimum once per day, will be composed of the following four report definitions. These reports are necessary to facilitate the initial build of the revenue management system as well as to support the subsequent daily processing. They are also necessary for the revenue management system to maintain its updated forecasts and decisions, and comprise of the following:

- Current Daily Totals Report
- Current Daily Categorized Report
- Past Daily Totals Report
- Past Daily Categorized Report

In summary, the scenarios outlined above are encompassed within the following functional capabilities:

- Reading – accepting the associated data from within an inbound message.

- Converting – translating the associated data to and from local coding and format standards, where appropriate, during receiving and transmitting operations.
- Storing – holding the associated data locally.
- Displaying – showing the associated data to users of the application in a way that maintains the logical association of the data to its purpose; i.e. in appropriate fields on-screen, or with appropriate notation if displayed as part of free-form text.
- Retransmitting – resending of the associated data in the correct position of an outbound message, where applicable.

The timing and frequency for the provision of the extracts will be based upon the daily schedule agreed between the trading partners.

The process being facilitated is that of exchanging statistical information between systems [generally, but not exclusively, a Revenue Management System and a Property Management System (PMS) or a Central Reservation System (CRS)].

Based on the type of information that needs to be exchanged, trading partners will select the appropriate scenario and fill in the Extensible Markup Language (XML) according to the guidelines provided in the specific scenario.

XML will then be sent to the appropriate webservice and the correct response will be used for the selected profile. To facilitate the ease of troubleshooting, it is highly recommended that both the sending and receiving systems log communications.

#### Behavior Expected Prior to Transmission

The behavior expected from a sending system will be:

- The provision of the appropriate extract, for the appropriate property, depending on whether the extract is the initial file; i.e. required to initiate system build, or snapshot file, required for normal daily processing.
- The provision of the appropriate extract, for the appropriate property, in accordance with the frequency and schedule agreed by the trading partners.
- Usage of the appropriate profile for the type of information to be sent.
- Translation of statistical information into codes understood by the receiving system (if required).
- Provision of all fields classified as Mandatory in the profile.
- Validation of XML message format.
- Transmission of the XML to appropriate URL set up by the receiving system using the appropriate identification criteria (SOAP username and password provided by the receiving system).
- Ensure proper processing of the response message.

### Behavior Expected from Receiving System

Upon receipt of the XML message the behavior expected from the receiving system will be:

- Process XML received by the sending system.
- Update hotel data with statistical information contained in the XML sent by the sending system.
- If update is not possible: create an error response as defined in the profile and transmit the response to the sending system.
- Acknowledge successful/unsuccessful processing of the upload using the appropriate response message.

### Behavior Expected upon Processing by Receiving System

Once the initial request has been processed by the receiving system, the sending system will need to:

- Be able to evaluate error responses coming from the receiving system.
- React to error responses as needed by modifying the XML and/or ensuring correct mapping tables are used.

## **3.1 Provide Statistics Report**

### **3.1.1 Overview**

This scenario shows how a publishing system sends a summary of their activity and general hotel data to a receiving system. The receiving system then completes an analysis of the data.

The FiscalDate attribute indicates the date that the data was captured and many systems treat this as the “as of” date. In other words, the FiscalDate is the date that a given set of statistics was captured for a range of dates.

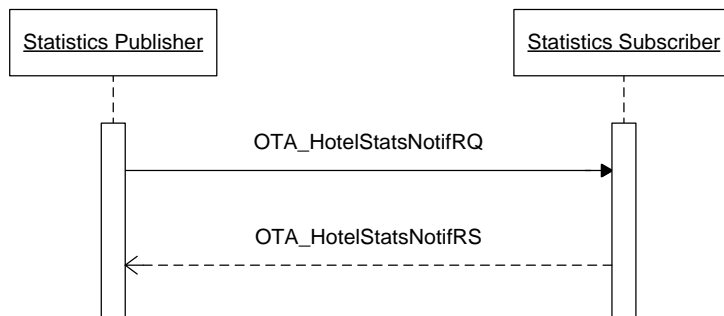
### **3.1.2 Roles**

Role Name	Definition	Example
Statistics Publisher	A system that maintains statistical information.	<ul style="list-style-type: none"><li>• Central Reservation System</li><li>• Property Management System</li><li>• Channel Management System</li><li>• Online Travel Agent</li></ul>
Statistics Subscriber	A system that has the need to obtain statistical information.	<ul style="list-style-type: none"><li>• Revenue Management System</li></ul>

### 3.1.3 Use Case

Assumptions:	<ul style="list-style-type: none"><li>• Publisher and Subscriber have agreed which attributes will be transmitted and accepted.</li><li>• Publisher and Subscriber have agreed upon a notification model (for example, event-triggered or timed interval).</li></ul>
Pre-condition:	None
Trigger:	Publisher determines that it has statistical data available.
Basic Course of Events:	<ol style="list-style-type: none"><li>1. Statistics Publisher constructs OTA_HotelStatsNotifRQ containing the statistical change(s).</li><li>2. Statistics Publisher successfully transmits message payload.</li><li>3. Statistics Subscriber receives the message payload.</li><li>4. Statistics Subscriber processes OTA_HotelStatsNotifRQ.</li><li>5. Statistics Subscriber acknowledges with the OTA_HotelStatsNotifRS indicating processing status of the message.</li><li>6. Statistics Publisher may update their database to log what was last successfully processed by the Subscriber.</li></ol>
Post-condition:	Statistics Subscriber system may update their log with what was last successfully processed.
Exception Path 1:	<ol style="list-style-type: none"><li>1. At step 3, the Statistics Subscriber does not successfully receive the message.</li><li>2. Statistics Subscriber does not return the OTA_HotelStatsNotifRS.</li><li>3. Statistics Publisher may:<ol style="list-style-type: none"><li>a. Log the unsuccessful send.</li><li>b. Resend the update notification immediately.</li><li>c. Re-queue the update notification.</li><li>d. Wait until the next agreed interval to send an update notification.</li></ol></li></ol>
Exception Path 2:	<ol style="list-style-type: none"><li>1. At Step 4, the Statistics Subscriber does not successfully process the message.</li><li>2. Statistics Subscriber returns OTA_HotelStatsNotifRS with the appropriate error indicator.</li><li>3. Statistics Publisher may:<ol style="list-style-type: none"><li>a. Log the response error.</li><li>b. Take action to correct the error and/or resend the transaction if necessary.</li><li>c. Re-queue the update notification.</li><li>d. Wait until the next agreed interval to send an update notification.</li></ol></li></ol>
Alternative Path:	If the Subscriber wishes to take on role of <i>Statistics Requester</i> , it then may perform a <a href="#">Request Statistics Report</a> .

### 3.1.4 Message Flows



### 3.1.5 Provide Totals Report

This message defines the process when statistical information in the publishing system must be sent to subscribers interested in changes to this information.

#### 3.1.5.1 Sample Scenario – Current Daily Totals Report by Room Type

The sample report below by room type shows the StatisticsCode element present, for current day totals.

Specific to this message:

- InventoryBlockStatusCodes must be present

##### 3.1.5.1.1 Sample Request

```
<OTA_HotelStatsNotifRQ xmlns="http://www.opentravel.org/OTA/2003/05"
EchoToken="952698" Timestamp="2013-12-02T23:30:53-05:00" Target="Production"
Version="1.001" PrimaryLangID="en-us">
  <Statistics>
    <Statistic ChainCode="1571" HotelCode="0001" FiscalDate="2013-12-02" ReportCode="
HTNG_CurrentDailyRoomTypeStatistics_v1">
      <StatisticApplicationSets>
        <StatisticApplicationSet Start="2013-12-02" End="2013-12-02">
          <StatisticCodes>
            <StatisticCode StatCode="DLX" StatCategoryCode="3"/>
          </StatisticCodes>
          <InventoryBlockStatusCodes>
            <InventoryBlockStatusCode Status="DEF" StatusCode="2"/>
          </InventoryBlockStatusCodes>
          <RevenueCategorySummaries>
            <RevenueCategorySummary RevenueCategoryCode="17" Amount="10987.50"/>
          </RevenueCategorySummaries>
          <CountCategorySummaries>
            <CountCategorySummary SummaryCount="66" CountCategoryCode="8"/>
            <CountCategorySummary SummaryCount="1" CountCategoryCode="9"/>
            <CountCategorySummary SummaryCount="0" CountCategoryCode="10"/>
            <CountCategorySummary SummaryCount="57" CountCategoryCode="11"/>
            <CountCategorySummary SummaryCount="28" CountCategoryCode="12"/>
            <CountCategorySummary SummaryCount="21" CountCategoryCode="13"/>
          </CountCategorySummaries>
        </StatisticApplicationSet>
      </StatisticApplicationSets>
    </Statistic>
  </Statistics>
</OTA_HotelStatsNotifRQ>
```

```

    <StatisticCodes>
      <StatisticCode StatCode="STD" StatCategoryCode="3"/>
    </StatisticCodes>
    <InventoryBlockStatusCodes>
      <InventoryBlockStatusCode Status="DEF" StatusCode="2"/>
    </InventoryBlockStatusCodes>
    <RevenueCategorySummaries>
      <RevenueCategorySummary RevenueCategoryCode="17" Amount="0.00"/>
    </RevenueCategorySummaries>
    <CountCategorySummaries>
      <CountCategorySummary SummaryCount="66" CountCategoryCode="8"/>
      <CountCategorySummary SummaryCount="0" CountCategoryCode="9"/>
      <CountCategorySummary SummaryCount="0" CountCategoryCode="10"/>
      <CountCategorySummary SummaryCount="0" CountCategoryCode="11"/>
      <CountCategorySummary SummaryCount="0" CountCategoryCode="12"/>
      <CountCategorySummary SummaryCount="0" CountCategoryCode="13"/>
    </CountCategorySummaries>
  </StatisticApplicationSet>
</StatisticApplicationSets>
</Statistic>
</Statistics>
</OTA_HotelStatsNotifRQ>

```

### 3.1.5.1.2 Sample Response

```

<OTA_HotelStatsNotifRS xmlns="http://www.opentravel.org/OTA/2003/05"
EchoToken="952698" Timestamp="2013-12-02T23:31:01-05:00" Target="Production"
Version="1.002" PrimaryLangID="en-us">
  <Success/>
</OTA_HotelStatsNotifRS>

```

### 3.1.5.2 Sample Scenario – Past Daily Totals Report by Property

The sample report below at property level shows past daily totals and does not show the StatisticsCode element, as it is not required.

#### 3.1.5.2.1 Sample Request

```

<OTA_HotelStatsNotifRQ xmlns="http://www.opentravel.org/OTA/2003/05"
EchoToken="952698" Timestamp="2013-12-02T23:30:47-05:00" Target="Production"
Version="1.002" PrimaryLangID="en-us">
  <Statistics>
    <Statistic ChainCode="1571" HotelCode="0001" FiscalDate="2013-12-02" ReportCode="
HTNG_PastDailyPropertyStatistics_v1">
      <StatisticApplicationSets>
        <StatisticApplicationSet Start="2013-11-30" End="2013-11-30">
          <RevenueCategorySummaries>
            <RevenueCategorySummary RevenueCategoryCode="17" Amount="10987.50"/>
          </RevenueCategorySummaries>
          <CountCategorySummaries>
            <CountCategorySummary SummaryCount="66" CountCategoryCode="8"/>
            <CountCategorySummary SummaryCount="1" CountCategoryCode="9"/>
            <CountCategorySummary SummaryCount="0" CountCategoryCode="10"/>
            <CountCategorySummary SummaryCount="57" CountCategoryCode="11"/>
            <CountCategorySummary SummaryCount="28" CountCategoryCode="12"/>
            <CountCategorySummary SummaryCount="21" CountCategoryCode="13"/>
            <CountCategorySummary SummaryCount="2" CountCategoryCode="14"/>
            <CountCategorySummary SummaryCount="1" CountCategoryCode="15"/>
          </CountCategorySummaries>
        </StatisticApplicationSet>
        <StatisticApplicationSet Start="2013-12-01" End="2013-12-01">
          <RevenueCategorySummaries>
            <RevenueCategorySummary RevenueCategoryCode="17" Amount="12947.00"/>
          </RevenueCategorySummaries>
          <CountCategorySummaries>
            <CountCategorySummary SummaryCount="66" CountCategoryCode="8"/>
            <CountCategorySummary SummaryCount="2" CountCategoryCode="9"/>
            <CountCategorySummary SummaryCount="0" CountCategoryCode="10"/>

```

```

        <CountCategorySummary SummaryCount="55" CountCategoryCode="11"/>
        <CountCategorySummary SummaryCount="24" CountCategoryCode="12"/>
        <CountCategorySummary SummaryCount="38" CountCategoryCode="13"/>
        <CountCategorySummary SummaryCount="1" CountCategoryCode="14"/>
        <CountCategorySummary SummaryCount="2" CountCategoryCode="15"/>
    </CountCategorySummaries>
</StatisticApplicationSet>
</StatisticApplicationSets>
</Statistic>
</Statistics>
</OTA_HotelStatsNotifRQ>

```

### 3.1.5.2.2 Sample Response

```

<OTA_HotelStatsNotifRS xmlns="http://www.opentravel.org/OTA/2003/05"
EchoToken="952698" Timestamp="2013-12-02T23:30:57-05:00" Target="Production"
Version="1.002" PrimaryLangID="en-us">
    <Success/>
</OTA_HotelStatsNotifRS>

```

## 3.1.6 Provide Categorized Report

This message defines the process when categorized statistical information in the publishing system must be sent to subscribers interested in changes to this information.

### 3.1.6.1 Sample Scenario – Current Daily Totals Report by Room Type

The below sample messages represent a current day, categorized report.

Specific to this message:

- InventoryBlockStatusCodes must be present

#### 3.1.6.1.1 Sample Request

```

<OTA_HotelStatsNotifRQ xmlns="http://www.opentravel.org/OTA/2003/05"
EchoToken="952698" Timestamp="2013-12-02T23:30:00-05:00" Target="Production"
Version="1.002" PrimaryLangID="en-us">
    <Statistics>
        <Statistic ChainCode="1571" HotelCode="0001" FiscalDate="2013-12-02"
ReportCode="HTNG_CurrentDailyRoomTypeStatistics_v1">
            <StatisticApplicationSets>
                <StatisticApplicationSet Start="2013-12-02" End="2013-12-02">
                    <StatisticCodes>
                        <StatisticCode StatCode="STD" StatCategoryCode="3"/>
                    </StatisticCodes>
                    <InventoryBlockStatusCodes>
                        <InventoryBlockStatusCode Status="DEF" StatusCode="2"/>
                    </InventoryBlockStatusCodes>
                    <RevenueCategorySummaries>
                        <RevenueCategorySummary RevenueCategoryCode="17" Amount="1392.75"/>
                    </RevenueCategorySummaries>
                    <CountCategorySummaries>
                        <CountCategorySummary SummaryCount="11" CountCategoryCode="11"/>
                        <CountCategorySummary SummaryCount="6" CountCategoryCode="12"/>
                        <CountCategorySummary SummaryCount="9" CountCategoryCode="13"/>
                    </CountCategorySummaries>
                </StatisticApplicationSet>
                <StatisticApplicationSet Start="2013-12-02" End="2013-12-02">
                    <StatisticCodes>
                        <StatisticCode StatCode="STD" StatCategoryCode="3"/>
                    </StatisticCodes>
                    <InventoryBlockStatusCodes>
                        <InventoryBlockStatusCode Status="TEN" StatusCode="7"/>
                    </InventoryBlockStatusCodes>
                </StatisticApplicationSet>
            </StatisticApplicationSets>
        </Statistic>
    </Statistics>
</OTA_HotelStatsNotifRQ>

```

```

</InventoryBlockStatusCodes>
<RevenueCategorySummaries>
  <RevenueCategorySummary RevenueCategoryCode="17" Amount="1292.75"/>
</RevenueCategorySummaries>
<CountCategorySummaries>
  <CountCategorySummary SummaryCount="11" CountCategoryCode="11"/>
  <CountCategorySummary SummaryCount="6" CountCategoryCode="12"/>
  <CountCategorySummary SummaryCount="9" CountCategoryCode="13"/>
</CountCategorySummaries>
</StatisticApplicationSet>
<StatisticApplicationSet Start="2013-12-02" End="2013-12-02">
  <StatisticCodes>
    <StatisticCode StatCode="DLX" StatCategoryCode="3"/>
  </StatisticCodes>
  <InventoryBlockStatusCodes>
    <InventoryBlockStatusCode Status="DEF" StatusCode="2"/>
  </InventoryBlockStatusCodes>
  <RevenueCategorySummaries>
    <RevenueCategorySummary RevenueCategoryCode="17" Amount="1000.75"/>
  </RevenueCategorySummaries>
  <CountCategorySummaries>
    <CountCategorySummary SummaryCount="11" CountCategoryCode="11"/>
    <CountCategorySummary SummaryCount="6" CountCategoryCode="12"/>
    <CountCategorySummary SummaryCount="9" CountCategoryCode="13"/>
  </CountCategorySummaries>
</StatisticApplicationSet>
<StatisticApplicationSet Start="2013-12-02" End="2013-12-02">
  <StatisticCodes>
    <StatisticCode StatCode="DLX" StatCategoryCode="3"/>
  </StatisticCodes>
  <InventoryBlockStatusCodes>
    <InventoryBlockStatusCode Status="TEN" StatusCode="7"/>
  </InventoryBlockStatusCodes>
  <RevenueCategorySummaries>
    <RevenueCategorySummary RevenueCategoryCode="17" Amount="900.75"/>
  </RevenueCategorySummaries>
  <CountCategorySummaries>
    <CountCategorySummary SummaryCount="11" CountCategoryCode="11"/>
    <CountCategorySummary SummaryCount="6" CountCategoryCode="12"/>
    <CountCategorySummary SummaryCount="9" CountCategoryCode="13"/>
  </CountCategorySummaries>
</StatisticApplicationSet>
</StatisticApplicationSets>
</Statistic>
</Statistics>
</OTA_HotelStatsNotifRQ>

```

### 3.1.6.1.2 Sample Response

```

<OTA_HotelStatsNotifRS xmlns="http://www.opentravel.org/OTA/2003/05"
EchoToken="952698" Timestamp="2013-12-02T23:30:13-05:00" Target="Production"
Version="1.002" PrimaryLangID="en-us">
  <Success/>
</OTA_HotelStatsNotifRS>

```

### 3.1.6.2 Sample Scenario – Past Daily Totals Report by Room Type

This report provides categorized statistics; for example, by Market Segment or Rate Plan, either at the property level or room type level for past activity at the hotel.

#### 3.1.6.2.1 Sample Request

```

<OTA_HotelStatsNotifRQ xmlns="http://www.opentravel.org/OTA/2003/05"
EchoToken="952698" Timestamp="2013-12-02T23:17:32-05:00" Target="Production"
Version="1.001" PrimaryLangID="en-us">
  <Statistics>
    <Statistic ChainCode="1571" HotelCode="0001" FiscalDate="2013-12-02"
ReportCode="HTNG_PastDailyRoomTypeStatistics_v1">

```

```

<StatisticApplicationSets>
  <StatisticApplicationSet Start="2013-11-30" End="2013-11-30">
    <StatisticCodes>
      <StatisticCode StatCode="C10" StatCategoryCode="2"/>
      <StatisticCode StatCode="STD" StatCategoryCode="3"/>
    </StatisticCodes>
    <RevenueCategorySummaries>
      <RevenueCategorySummary RevenueCategoryCode="17" Amount="1392.75"/>
    </RevenueCategorySummaries>
    <CountCategorySummaries>
      <CountCategorySummary SummaryCount="11" CountCategoryCode="11"/>
      <CountCategorySummary SummaryCount="6" CountCategoryCode="12"/>
      <CountCategorySummary SummaryCount="9" CountCategoryCode="13"/>
      <CountCategorySummary SummaryCount="2" CountCategoryCode="14"/>
      <CountCategorySummary SummaryCount="1" CountCategoryCode="15"/>
    </CountCategorySummaries>
  </StatisticApplicationSet>
  <StatisticApplicationSet Start="2013-11-30" End="2013-11-30">
    <StatisticCodes>
      <StatisticCode StatCode="C20" StatCategoryCode="2"/>
      <StatisticCode StatCode="STD" StatCategoryCode="3"/>
    </StatisticCodes>
    <RevenueCategorySummaries>
      <RevenueCategorySummary RevenueCategoryCode="17" Amount="3825.00"/>
    </RevenueCategorySummaries>
    <CountCategorySummaries>
      <CountCategorySummary SummaryCount="19" CountCategoryCode="11"/>
      <CountCategorySummary SummaryCount="12" CountCategoryCode="12"/>
      <CountCategorySummary SummaryCount="5" CountCategoryCode="13"/>
      <CountCategorySummary SummaryCount="0" CountCategoryCode="14"/>
      <CountCategorySummary SummaryCount="1" CountCategoryCode="15"/>
    </CountCategorySummaries>
  </StatisticApplicationSet>
  <StatisticApplicationSet Start="2013-11-30" End="2013-11-30">
    <StatisticCodes>
      <StatisticCode StatCode="C30" StatCategoryCode="2"/>
      <StatisticCode StatCode="STD" StatCategoryCode="3"/>
    </StatisticCodes>
    <RevenueCategorySummaries>
      <RevenueCategorySummary RevenueCategoryCode="17" Amount="2114.25"/>
    </RevenueCategorySummaries>
    <CountCategorySummaries>
      <CountCategorySummary SummaryCount="15" CountCategoryCode="11"/>
      <CountCategorySummary SummaryCount="6" CountCategoryCode="12"/>
      <CountCategorySummary SummaryCount="4" CountCategoryCode="13"/>
      <CountCategorySummary SummaryCount="0" CountCategoryCode="14"/>
      <CountCategorySummary SummaryCount="0" CountCategoryCode="15"/>
    </CountCategorySummaries>
  </StatisticApplicationSet>
  <StatisticApplicationSet Start="2013-12-01" End="2013-12-01">
    <StatisticCodes>
      <StatisticCode StatCode="C10" StatCategoryCode="2"/>
      <StatisticCode StatCode="DLX" StatCategoryCode="3"/>
    </StatisticCodes>
    <RevenueCategorySummaries>
      <RevenueCategorySummary RevenueCategoryCode="17" Amount="0.00"/>
    </RevenueCategorySummaries>
    <CountCategorySummaries>
      <CountCategorySummary SummaryCount="0" CountCategoryCode="11"/>
      <CountCategorySummary SummaryCount="0" CountCategoryCode="12"/>
      <CountCategorySummary SummaryCount="0" CountCategoryCode="13"/>
      <CountCategorySummary SummaryCount="0" CountCategoryCode="14"/>
      <CountCategorySummary SummaryCount="0" CountCategoryCode="15"/>
    </CountCategorySummaries>
  </StatisticApplicationSet>
  <StatisticApplicationSet Start="2013-12-01" End="2013-12-01">
    <StatisticCodes>
      <StatisticCode StatCode="C20" StatCategoryCode="2"/>
      <StatisticCode StatCode="DLX" StatCategoryCode="3"/>
    </StatisticCodes>
    <RevenueCategorySummaries>

```

```

        <RevenueCategorySummary RevenueCategoryCode="17" Amount="0.00"/>
      </RevenueCategorySummaries>
    <CountCategorySummaries>
      <CountCategorySummary SummaryCount="0" CountCategoryCode="11"/>
      <CountCategorySummary SummaryCount="0" CountCategoryCode="12"/>
      <CountCategorySummary SummaryCount="0" CountCategoryCode="13"/>
      <CountCategorySummary SummaryCount="0" CountCategoryCode="14"/>
      <CountCategorySummary SummaryCount="0" CountCategoryCode="15"/>
    </CountCategorySummaries>
  </StatisticApplicationSet>
</StatisticApplicationSet Start="2013-12-01" End="2013-12-01">
  <StatisticCodes>
    <StatisticCode StatCode="C30" StatCategoryCode="2"/>
    <StatisticCode StatCode="DLX" StatCategoryCode="3"/>
  </StatisticCodes>
  <RevenueCategorySummaries>
    <RevenueCategorySummary RevenueCategoryCode="17" Amount="0.00"/>
  </RevenueCategorySummaries>
  <CountCategorySummaries>
    <CountCategorySummary SummaryCount="0" CountCategoryCode="11"/>
    <CountCategorySummary SummaryCount="0" CountCategoryCode="12"/>
    <CountCategorySummary SummaryCount="0" CountCategoryCode="13"/>
    <CountCategorySummary SummaryCount="0" CountCategoryCode="14"/>
    <CountCategorySummary SummaryCount="0" CountCategoryCode="15"/>
  </CountCategorySummaries>
</StatisticApplicationSet>
</StatisticApplicationSets>
</Statistic>
</Statistics>
</OTA_HotelStatsNotifRS>

```

### 3.1.6.2.2 Sample Response

```

<OTA_HotelStatsNotifRS xmlns="http://www.opentravel.org/OTA/2003/05"
EchoToken="952698" Timestamp="2013-12-02T23:17:38-05:00" Target="Production"
Version="1.002" PrimaryLangID="en-us">
  <Success/>
</OTA_HotelStatsNotifRS>

```

## 3.2 Request Statistics Report

### 3.2.1 Overview

This scenario shows how a responding system sends a summary of their activity and general hotel data to a requesting system. The requesting system then completes an analysis of the data.

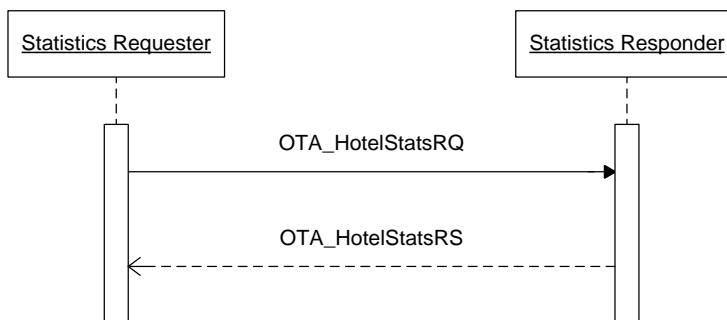
### 3.2.2 Roles

Role Name	Definition	Example
Statistics Requester	A system that has the need to obtain statistical information.	<ul style="list-style-type: none"> <li>Revenue Management System</li> </ul>
Statistics Responder	A system that maintains statistical information.	<ul style="list-style-type: none"> <li>Central Reservation System</li> <li>Property Management System</li> <li>Channel Management System</li> <li>Online Travel Agent</li> </ul>

### 3.2.3 Use Case

Assumption:	Statistics Requester and Statistics Responder have agreed which attributes will be transmitted and accepted.
Pre-condition:	None
Trigger:	The Statistics Requester, through event or manual action, has determined that it must obtain statistical information from the Statistics Responder.
Basic Course of Events:	<ol style="list-style-type: none"><li>1. Statistics Requester constructs OTA_HotelStatsRQ with the appropriate query parameters.</li><li>2. Statistics Requester successfully transmits message payload.</li><li>3. Statistics Responder receives the message payload.</li><li>4. Statistics Responder processes OTA_HotelStatsRQ.</li><li>5. Statistics Responder returns the statistical information appropriate to the query parameters, using OTA_HotelStatsRS.</li></ol>
Post-condition:	Statistics Requester may update their database to log what was last successfully processed.
Exception Path:	None
Alternative Path:	None

### 3.2.4 Message Flows



### 3.2.5 Request Statistics Report

This message defines the process when statistical information (by market segment) in the Statistics Requester must be refreshed by the Statistics Responder holding changes to this information.

#### 3.2.5.1 Sample Scenario - Current Daily Totals Report by Room Type

The below sample messages represent a current day, categorized report by market segments at the room type level.

Specific to this message:

- InventoryBlockStatusCodes must be present

### 3.2.5.1.1 Sample Request

```
<OTA_HotelStatsRQ xmlns="http://www.opentravel.org/OTA/2003/05" EchoToken="952698"
TimeStamp="2013-12-02T05:30:00-05:00" Target="Production" version="1.002"
PrimaryLangID="en-us">
  <RequestedHotels>
    <RequestedHotel ChainCode="1571" HotelCode="0001">
      <RequestedReports>
        <RequestedReport FiscalDate="2013-12-02" Start="2013-12-02" End="2013-12-
02" ReportCode="HTNG_CurrentDailyRoomTypeStatistics_v1"/>
      </RequestedReports>
    </RequestedHotel>
  </RequestedHotels>
</OTA_HotelStatsRQ>
```

### 3.2.5.1.2 Sample Response

```
<OTA_HotelStatsRS xmlns="http://www.opentravel.org/OTA/2003/05" EchoToken="952698"
TimeStamp="2013-12-02T05:30:00-05:00" Target="Production" version="1.001"
PrimaryLangID="en-us">
  <Statistics>
    <Statistic ChainCode="1571" HotelCode="0001" FiscalDate="2013-12-02"
ReportCode="HTNG_CurrentDailyRoomTypeStatistics_v1">
      <StatisticApplicationSets>
        <StatisticApplicationSet Start="2013-12-02" End="2013-12-02">
          <StatisticCodes>
            <StatisticCode StatCode="COR" StatCategoryCode="1"/>
            <StatisticCode StatCode="STD" StatCategoryCode="3"/>
          </StatisticCodes>
          <InventoryBlockStatusCodes>
            <InventoryBlockStatusCode Status="DEF" StatusCode="2"/>
          </InventoryBlockStatusCodes>
          <RevenueCategorySummaries>
            <RevenueCategorySummary RevenueCategoryCode="17" Amount="1392.75"/>
          </RevenueCategorySummaries>
          <CountCategorySummaries>
            <CountCategorySummary SummaryCount="11" CountCategoryCode="11"/>
          </CountCategorySummaries>
        </StatisticApplicationSet>
        <StatisticApplicationSet Start="2013-12-02" End="2013-12-02">
          <StatisticCodes>
            <StatisticCode StatCode="COR" StatCategoryCode="1"/>
            <StatisticCode StatCode="STD" StatCategoryCode="3"/>
          </StatisticCodes>
          <InventoryBlockStatusCodes>
            <InventoryBlockStatusCode Status="TEN" StatusCode="7"/>
          </InventoryBlockStatusCodes>
          <RevenueCategorySummaries>
            <RevenueCategorySummary RevenueCategoryCode="17" Amount="1392.75"/>
          </RevenueCategorySummaries>
          <CountCategorySummaries>
            <CountCategorySummary SummaryCount="11" CountCategoryCode="11"/>
          </CountCategorySummaries>
        </StatisticApplicationSet>
        <StatisticApplicationSet Start="2013-12-02" End="2013-12-02">
          <StatisticCodes>
            <StatisticCode StatCode="WLS" StatCategoryCode="1"/>
            <StatisticCode StatCode="STD" StatCategoryCode="3"/>
          </StatisticCodes>
          <InventoryBlockStatusCodes>
            <InventoryBlockStatusCode Status="DEF" StatusCode="2"/>
          </InventoryBlockStatusCodes>
          <RevenueCategorySummaries>
            <RevenueCategorySummary RevenueCategoryCode="17" Amount="2114.25"/>
          </RevenueCategorySummaries>
        </StatisticApplicationSet>
      </StatisticApplicationSets>
    </Statistic>
  </Statistics>
</OTA_HotelStatsRS>
```

```

    </RevenueCategorySummaries>
    <CountCategorySummaries>
      <CountCategorySummary SummaryCount="15" CountCategoryCode="11"/>
    </CountCategorySummaries>
  </StatisticApplicationSet>
  <StatisticApplicationSet Start="2013-12-02" End="2013-12-02">
    <StatisticCodes>
      <StatisticCode StatCode="WLS" StatCategoryCode="1"/>
      <StatisticCode StatCode="STD" StatCategoryCode="3"/>
    </StatisticCodes>
    <InventoryBlockStatusCodes>
      <InventoryBlockStatusCode Status="TEN" StatusCode="7"/>
    </InventoryBlockStatusCodes>
    <RevenueCategorySummaries>
      <RevenueCategorySummary RevenueCategoryCode="17" Amount="2114.25"/>
    </RevenueCategorySummaries>
    <CountCategorySummaries>
      <CountCategorySummary SummaryCount="15" CountCategoryCode="11"/>
    </CountCategorySummaries>
  </StatisticApplicationSet>
</StatisticApplicationSets>
</Statistic>
</Statistics>
</OTA_HotelStatsRS>

```

### 3.2.5.2 Sample Scenario – Past Daily Totals Report by Room Type

The below sample messages represent a past date range, categorized report by market segment at the room type level.

#### 3.2.5.2.1 Sample Request

```

<OTA_HotelStatsRQ xmlns="http://www.opentravel.org/OTA/2003/05"
EchoToken="952698" Timestamp="2013-12-02T05:30:00-05:00"
Target="Production" Version="1.001" PrimaryLangID="en-us">
  <RequestedHotels>
    <RequestedHotel ChainCode="1571" HotelCode="0001">
      <RequestedReports>
        <RequestedReport FiscalDate="2013-04-18" Start="2013-06-19" End="2013-06-20" ReportCode="HTNG_PastDailyRoomTypeStatistics_v1"/>
      </RequestedReports>
    </RequestedHotel>
  </RequestedHotels>
</OTA_HotelStatsRQ>

```

#### 3.2.5.2.2 Sample Response

```

<OTA_HotelStatsRS xmlns="http://www.opentravel.org/OTA/2003/05" EchoToken="952698"
Timestamp="2013-12-02T05:30:07-05:00" Target="Production" Version="1.001"
PrimaryLangID="en-us">
  <Statistics>
    <Statistic ChainCode="1571" HotelCode="0001" FiscalDate="2013-04-18"
ReportCode="HTNG_PastDailyRoomTypeStatistics_v1">
      <StatisticApplicationSets>
        <StatisticApplicationSet Start="2013-06-19" End="2013-06-19">
          <StatisticCodes>
            <StatisticCode StatCode="WLS" StatCategoryCode="1"/>
            <StatisticCode StatCode="STD" StatCategoryCode="3"/>
          </StatisticCodes>
          <RevenueCategorySummaries>
            <RevenueCategorySummary RevenueCategoryCode="17" Amount="1392.75"/>
          </RevenueCategorySummaries>
          <CountCategorySummaries>
            <CountCategorySummary SummaryCount="11" CountCategoryCode="11"/>
          </CountCategorySummaries>
        </StatisticApplicationSet>
      </StatisticApplicationSets>
    </Statistic>
  </Statistics>

```

```

    <StatisticCodes>
      <StatisticCode StatCode="COR" StatCategoryCode="1"/>
      <StatisticCode StatCode="STD" StatCategoryCode="3"/>
    </StatisticCodes>
    <RevenueCategorySummaries>
      <RevenueCategorySummary RevenueCategoryCode="17" Amount="3825.00"/>
    </RevenueCategorySummaries>
    <CountCategorySummaries>
      <CountCategorySummary SummaryCount="19" CountCategoryCode="11"/>
    </CountCategorySummaries>
  </StatisticApplicationSet>
</StatisticApplicationSet Start="2013-06-19" End="2013-06-19">
  <StatisticCodes>
    <StatisticCode StatCode="WLS" StatCategoryCode="1"/>
    <StatisticCode StatCode="DLX" StatCategoryCode="3"/>
  </StatisticCodes>
  <RevenueCategorySummaries>
    <RevenueCategorySummary RevenueCategoryCode="17" Amount="0.00"/>
  </RevenueCategorySummaries>
  <CountCategorySummaries>
    <CountCategorySummary SummaryCount="0" CountCategoryCode="11"/>
  </CountCategorySummaries>
</StatisticApplicationSet>
</StatisticApplicationSet Start="2013-06-19" End="2013-06-19">
  <StatisticCodes>
    <StatisticCode StatCode="COR" StatCategoryCode="1"/>
    <StatisticCode StatCode="DLX" StatCategoryCode="3"/>
  </StatisticCodes>
  <RevenueCategorySummaries>
    <RevenueCategorySummary RevenueCategoryCode="17" Amount="0.00"/>
  </RevenueCategorySummaries>
  <CountCategorySummaries>
    <CountCategorySummary SummaryCount="0" CountCategoryCode="11"/>
  </CountCategorySummaries>
</StatisticApplicationSet>
</StatisticApplicationSet Start="2013-06-20" End="2013-06-20">
  <StatisticCodes>
    <StatisticCode StatCode="WLS" StatCategoryCode="1"/>
    <StatisticCode StatCode="STD" StatCategoryCode="3"/>
  </StatisticCodes>
  <RevenueCategorySummaries>
    <RevenueCategorySummary RevenueCategoryCode="17" Amount="1392.75"/>
  </RevenueCategorySummaries>
  <CountCategorySummaries>
    <CountCategorySummary SummaryCount="11" CountCategoryCode="11"/>
  </CountCategorySummaries>
</StatisticApplicationSet>
</StatisticApplicationSet Start="2013-06-20" End="2013-06-20">
  <StatisticCodes>
    <StatisticCode StatCode="COR" StatCategoryCode="1"/>
    <StatisticCode StatCode="STD" StatCategoryCode="3"/>
  </StatisticCodes>
  <RevenueCategorySummaries>
    <RevenueCategorySummary RevenueCategoryCode="17" Amount="3825.00"/>
  </RevenueCategorySummaries>
  <CountCategorySummaries>
    <CountCategorySummary SummaryCount="19" CountCategoryCode="11"/>
  </CountCategorySummaries>
</StatisticApplicationSet>
</StatisticApplicationSet Start="2013-06-20" End="2013-06-20">
  <StatisticCodes>
    <StatisticCode StatCode="WLS" StatCategoryCode="1"/>
    <StatisticCode StatCode="DLX" StatCategoryCode="3"/>
  </StatisticCodes>
  <RevenueCategorySummaries>
    <RevenueCategorySummary RevenueCategoryCode="17" Amount="0.00"/>
  </RevenueCategorySummaries>
  <CountCategorySummaries>
    <CountCategorySummary SummaryCount="0" CountCategoryCode="11"/>
  </CountCategorySummaries>
</StatisticApplicationSet>

```

```
<StatisticApplicationSet Start="2013-06-20" End="2013-06-20">
  <StatisticCodes>
    <StatisticCode StatCode="COR" StatCategoryCode="1"/>
    <StatisticCode StatCode="DLX" StatCategoryCode="3"/>
  </StatisticCodes>
  <RevenueCategorySummaries>
    <RevenueCategorySummary RevenueCategoryCode="17" Amount="0.00"/>
  </RevenueCategorySummaries>
  <CountCategorySummaries>
    <CountCategorySummary SummaryCount="0" CountCategoryCode="11"/>
  </CountCategorySummaries>
</StatisticApplicationSet>
</StatisticApplicationSets>
</Statistic>
</Statistics>
</OTA_HotelStatsRS>
```

## 4 Messages

### 4.1 Provide Statistics Report

#### 4.1.1 Data Element Table

Element   @Attribute	Num	Description/Contents
OTA_HotelStatsNotifRQ	1	Root element of the message.
@EchoToken	0..1	As per OpenTravel Alliance Specifications.
@Version	1	As per OpenTravel Alliance Specifications.
@TimeStamp	1	Time of the transaction.
OTA_HotelStatsNotifRQ / POS / Source / RequestorID	1	This identifies the system that is sending the statistical data.
@Type	1	Type attribute uses the OpenTravel Alliance code list UIT. For example, type 22 – ERSP (Electronic reservation service provider).
@ID	1	ID is used for the name or ID of the requestor. For example, TrustCRS.
OTA_HotelStatsNotifRQ / Statistics / Statistic	1..n	If only sending one report then this element is present once. It is possible to send other reports in the same message by sending this element several times.
@ChainCode	1	Chain code for the hotel. Code value to be agreed by trading partners.
@HotelCode	1	Hotel code for the hotel. Code value to be agreed by trading partners.

@ReportCode	1	<p>String identifying the predefined report and thus what fields and values are expected.</p> <p>Current Daily Totals Report:</p> <ul style="list-style-type: none"> <li>HTNG_CurrentDailyPropertyStatistics_v1</li> <li>HTNG_CurrentDailyRoomTypeStatistics_v1</li> </ul> <p>Current Daily Categorized Report:</p> <ul style="list-style-type: none"> <li>HTNG_CurrentDailySegmentStatistics_v1</li> <li>HTNG_CurrentDailyRatePlanStatistics_v1</li> <li>HTNG_CurrentDailyRatePlanRoomTypeStatistics_v1</li> <li>HTNG_CurrentDailySegmentRoomTypeStatistics_v1</li> </ul> <p>Past Daily Totals Report:</p> <ul style="list-style-type: none"> <li>HTNG_PastDailyPropertyStatistics_v1</li> <li>HTNG_PastDailyRoomTypeStatistics_v1</li> </ul> <p>Past Daily Categorized Report:</p> <ul style="list-style-type: none"> <li>HTNG_PastDailyRatePlanStatistics_v1</li> <li>HTNG_PastDailyRatePlanRoomTypeStatistics_v1</li> <li>HTNG_PastDailySegmentRoomTypeStatistics_v1</li> <li>HTNG_PastDailySegmentStatistics_v1</li> </ul>
@FiscalDate	1	Capture date and time. Indicates the time at which the data was captured.
OTA_HotelStatsNotifRQ / Statistics / Statistic / StatisticApplicationSets / StatisticApplicationSet	1..n	<p>This element represents a “row” in the report and so it is repeated for the length of the report.</p> <p>For this report N is the number of days in the report, normally 365.</p>
@Start	1	The start date for which the statistics in the sub-elements that follow was collected.
@End	1	The end date for which the statistics in the sub-elements that follow was collected.
OTA_HotelStatsNotifRQ / Statistics / Statistic / StatisticApplicationSets / StatisticApplicationSet / StatisticCodes / StatisticCode	0..1	<p>Element with the categories at which the data has been gathered.</p> <p>This element is Required when sending values at room type level.</p>
@StatCategoryCode	1	<p>Code value from OpenTravel Alliance Code List Stat Category Code (SCC).</p> <p>The value for room type is 3.</p>
@StatCode	1	String with the room type code from the property.

OTA_HotelStatsNotifRQ / Statistics / Statistic / StatisticApplicationSets / StatisticApplicationSet / RevenueCategorySummaries / RevenueCategorySummary	0..17	<p>Repeating element for each revenue value in the report. All values correspond to the totals for the date in the @Start attribute defined above.</p> <p>No values are Required.</p> <p>The following values are Optional:</p> <ul style="list-style-type: none"><li>• Room Revenue: Room only revenue.</li><li>• Food &amp; Beverage Revenue: Food and beverage revenue.</li><li>• Total Revenue: Total revenue, must be greater than or equal to the sum of room revenue and food and beverage revenue.</li><li>• Golf</li><li>• Laundry</li><li>• Parking</li><li>• Pay per View</li><li>• Service Charge</li><li>• Spa</li><li>• Tax</li><li>• Telephone</li><li>• Tennis</li><li>• Valet</li><li>• Internet Access: Revenue achieved from selling Internet connections via chargeable methods.</li><li>• Gaming Revenues: Revenue achieved from any gaming undertaken on property related to guest/room.</li><li>• Chauffeur/Cars: Revenue from the use of cars and or chauffeurs for a guest.</li><li>• Other: Additional revenue not identified by any of the other categories above.</li></ul>
--	-------	---

@RevenueCategoryCode	1	Code value from OpenTravel Alliance Code List Revenue Category Code (RCC). The following values are to be used: 9: Room Revenue 3: Food & Beverage Revenue 17: Total Revenue 4: Golf 5: Laundry 7: Parking 8: Pay per View 10: Service Charge 11: Spa 12: Tax 14: Telephone 15: Tennis 16: Valet 18: Internet Access 19: Gaming 20: Chauffeur/Cars 6: Other
@Amount	1	Amount value for the revenue code being reported.
@Currency	0..1	Currency for the amount transferred for the revenue code being reported, in ISO 4217 codes.

OTA_HotelStatsNotifRQ / Statistics / Statistic / StatisticApplicationSets / StatisticApplicationSet / CountCategorySummaries / CountCategorySummary	6..10	<p>Repeating element for each count value in the report. All values correspond to the totals for the date in the @Start attribute defined above.</p> <p>The following values are Required:</p> <ul style="list-style-type: none"> <li>Physical capacity: Total number of rooms at the property.</li> <li>Rooms out of order: Rooms taken out of inventory for maintenance reasons.</li> <li>Rooms not available: Rooms taken out of inventory for other reasons.</li> <li>Rooms sold: Rooms sold/on books (for future dates).</li> <li>Room arrivals: Rooms with arrival on the date (*).</li> <li>Room departures: Rooms with departure on the date (*).</li> <li>The following values are Optional:</li> <li>Rooms cancelled: Cancelled rooms with arrival on the date.</li> <li>Denials: Reservations that were not able to be taken for various reasons (full, LOS, etc.) and rejected.</li> <li>Day Use: Rooms that are sold to guests (internal or external) for business use such as meetings, etc.</li> <li>Complimentary: A room that is not charged to a guest.</li> </ul> <p>(*) In the case of shares with different arrivals and departures for individuals, the first arrival date and the last departure date should be used for the counts.</p>
@CountCategoryCode	1	<p>Code value from OpenTravel Alliance Code List Count Category Code (CNT). The following values are to be used:</p> <p>8: Physical capacity 9: Rooms out of order 10: Room not available 11: Rooms sold 12: Room arrivals 13: Room departures 14: Rooms cancelled 16: Denials 19: Day use 22: Complimentary</p>
@SummaryCount	1	Amount value for the count code being reported.

### 4.1.2 Data Element Table

Element   @Attribute	Num	Description/Contents
OTA_HotelStatsNotifRS	1	Root element of the message.
@EchoToken	0..1	As per OpenTravel Alliance Specifications.
@Version	1	As per OpenTravel Alliance Specifications.
@TimeStamp	1	Time of the transaction.
OTA_HotelStatsNotifRS / Success	0..1	Used to indicate successful processing of the request.
OTA_HotelStatsNotifRS / Warnings	0..1	A collection of warnings.
OTA_HotelStatsNotifRS / Warnings / Warning	1..n	Used when a message has been successfully processed to report any warnings that occurred.
@Code	1	If present, this refers to a table of coded values exchanged between applications to identify errors or warnings. Refer to OpenTravel Code List Error Codes (ERR).
@Type	1	The Warning element MUST contain the Type attribute that uses a recommended set of values to indicate the warning type. The validating XSD can expect to accept values for which it has NOT been explicitly coded and process them by using Type = "Unknown". Refer to OpenTravel Code List Error Warning Type (EWT).
@ShortText	0..1	An abbreviated version of the error in textual format.
OTA_HotelStatsNotifRS / Errors	0..1	A collection of errors.
OTA_HotelStatsNotifRS / Errors / Error	1..n	Used when a message has not been successfully processed to report any warnings or business errors that occurred.
@Code	1	If present, this refers to a table of coded values exchanged between applications to identify errors or warnings. Refer to OpenTravel Code List Error Codes (ERR).
@Type	1	The Warning element MUST contain the Type attribute that uses a recommended set of values to indicate the warning type. The validating XSD can expect to accept values for which it has NOT been explicitly coded and process them by using Type = "Unknown". Refer to OpenTravel Code List Error Warning Type (EWT).
@ShortText	0..1	An abbreviated version of the error in textual format.

## 4.2 Request Statistics Report

### 4.2.1 Data Element Table

Element   @Attribute	Num	Description/Contents
OTA_HotelStatsRQ	1	Root element of the message.

Element   @Attribute	Num	Description/Contents
@EchoToken	0..1	As per OpenTravel Alliance Specifications.
@Version	1	As per OpenTravel Alliance Specifications.
@TimeStamp	1	Time of the transaction.
OTA_HotelStatsRQ / RequestedHotels	1	Collection of requested hotels.
OTA_HotelStatsRQ / RequestedHotels / RequestedHotel	1..n	Identifies each hotel or set of hotels for which reports are being requested.
@HotelCode	1	Hotel code for the hotel. Code value to be agreed by trading partners.
@ChainCode	1	Chain code for the hotel. Code value to be agreed by trading partners.
@BrandCode	0..1	Brand code for the hotel. Code value to be agreed by trading partners.
OTA_HotelStatsRQ / RequestedHotels / RequestedHotel / RequestedReports	1	Collection of requested statistical reports.
OTA_HotelStatsRQ / RequestedHotels / RequestedHotel / RequestedReports / RequestedReport	1..n	Identifies a report being requested.
@FiscalDate	1	Capture date and time. Indicates the time at which the data was captured.
@Start	1	The start date for which the statistics should be collected.
@End	1	The end date for which the statistics should be collected.

Element   @Attribute	Num	Description/Contents
@ReportCode	1	<p>String identifying the predefined report and thus what fields and values are expected.</p> <p>Current Daily Totals Report:</p> <ul style="list-style-type: none"> <li>HTNG_CurrentDailyPropertyStatistics_v1</li> <li>HTNG_CurrentDailyRoomTypeStatistics_v1</li> </ul> <p>Current Daily Categorized Report:</p> <ul style="list-style-type: none"> <li>HTNG_CurrentDailySegmentStatistics_v1</li> <li>HTNG_CurrentDailyRatePlanStatistics_v1</li> <li>HTNG_CurrentDailyRatePlanRoomTypeStatistics_v1</li> <li>HTNG_CurrentDailySegmentRoomTypeStatistics_v1</li> </ul> <p>Past Daily Totals Report:</p> <ul style="list-style-type: none"> <li>HTNG_PastDailyPropertyStatistics_v1</li> <li>HTNG_PastDailyRoomTypeStatistics_v1</li> </ul> <p>Past Daily Categorized Report:</p> <ul style="list-style-type: none"> <li>HTNG_PastDailyRatePlanStatistics_v1</li> <li>HTNG_PastDailyRatePlanRoomTypeStatistics_v1</li> <li>HTNG_PastDailySegmentRoomTypeStatistics_v1</li> <li>HTNG_PastDailySegmentStatistics_v1</li> </ul>

#### 4.2.2 Data Element Table

Element   @Attribute	Num	Description/Contents
OTA_HotelStatsRS	1	Root element of the message.
@EchoToken	0..1	As per OpenTravel Alliance Specifications.
@Version	1	As per OpenTravel Alliance Specifications.
@TimeStamp	1	Time of the transaction.
OTA_HotelStatsRS / Success	0..1	Used to indicate successful processing of the request.
OTA_HotelStatsRS / Warnings	0..1	A collection of warnings.
OTA_HotelStatsRS / Warnings / Warning	1..n	Used when a message has been successfully processed to report any warnings that occurred.
@Code	1	If present, this refers to a table of coded values exchanged between applications to identify errors or warnings. Refer to OpenTravel Code List Error Codes (ERR).
@Type	1	The Warning element MUST contain the Type attribute that uses a recommended set of values to indicate the warning type. The validating XSD can expect to accept values for which it has NOT been explicitly coded and process them by using Type = "Unknown". Refer to OpenTravel Code List Error Warning Type (EWT).

@ShortText	0..1	An abbreviated version of the error in textual format.
OTA_HotelStatsRS / Errors	0..1	A collection of errors.
OTA_HotelStatsRS / Errors / Error	1..n	Used when a message has not been successfully processed to report any warnings or business errors that occurred.
@Code	1	If present, this refers to a table of coded values exchanged between applications to identify errors or warnings. Refer to OpenTravel Code List Error Codes (ERR).
@Type	1	The Warning element MUST contain the Type attribute that uses a recommended set of values to indicate the warning type. The validating XSD can expect to accept values for which it has NOT been explicitly coded and process them by using Type = "Unknown". Refer to OpenTravel Code List Error Warning Type (EWT).
@ShortText	0..1	An abbreviated version of the error in textual format.
OTA_HotelStatsRS / Statistics / Statistic	1..n	If only sending one report then this element is present once. It is possible to send other reports in the same message by sending this element several times.
@ChainCode	1	Chain code for the hotel. Code value to be agreed by trading partners.
@HotelCode	1	Hotel code for the hotel. Code value to be agreed by trading partners.
@ReportCode	1	<p>String identifying the predefined report and thus what fields and values are expected.</p> <p>Current Daily Totals Report:</p> <ul style="list-style-type: none"> <li>HTNG_CurrentDailyPropertyStatistics_v1</li> <li>HTNG_CurrentDailyRoomTypeStatistics_v1</li> </ul> <p>Current Daily Categorized Report:</p> <ul style="list-style-type: none"> <li>HTNG_CurrentDailySegmentStatistics_v1</li> <li>HTNG_CurrentDailyRatePlanStatistics_v1</li> <li>HTNG_CurrentDailyRatePlanRoomTypeStatistics_v1</li> <li>HTNG_CurrentDailySegmentRoomTypeStatistics_v1</li> </ul> <p>Past Daily Totals Report:</p> <ul style="list-style-type: none"> <li>HTNG_PastDailyPropertyStatistics_v1</li> <li>HTNG_PastDailyRoomTypeStatistics_v1</li> </ul> <p>Past Daily Categorized Report:</p> <ul style="list-style-type: none"> <li>HTNG_PastDailyRatePlanStatistics_v1</li> <li>HTNG_PastDailyRatePlanRoomTypeStatistics_v1</li> <li>HTNG_PastDailySegmentRoomTypeStatistics_v1</li> </ul> <p>HTNG_PastDailySegmentStatistics_v1</p>

@FiscalDate	1	Capture date and time. Indicates the time at which the data was captured.
OTA_HotelStatsRS / Statistics / Statistic / StatisticApplicationSets / StatisticApplicationSet	1..n	This element represents a “row” in the report and so it is repeated for the length of the report.  For this report N is the number of days in the report, normally 365.
@Start	1	The start date for which the statistics in the sub-elements that follow was collected.
@End	1	The end date for which the statistics in the sub-elements that follow was collected.
OTA_HotelStatsRS / Statistics / Statistic / StatisticApplicationSets / StatisticApplicationSet / StatisticCodes / StatisticCode	0..1	Element with the categories at which the data has been gathered.  This element is Required when sending values at room type level.
@StatCategoryCode	1	Code value from OpenTravel Alliance Code List Stat Category Code (SCC).  The value for room type is 3.
@StatCode	1	String with the room type code from the property.

OTA_HotelStatsRS / Statistics / Statistic / StatisticApplicationSets / StatisticApplicationSet / RevenueCategorySummaries / RevenueCategorySummary	0..17	<p>Repeating element for each revenue value in the report. All values correspond to the totals for the date in the @Start attribute defined above.</p> <p>No values are Required.</p> <p>The following values are Optional:</p> <ul style="list-style-type: none"><li>• Room Revenue: Room only revenue.</li><li>• Food &amp; Beverage Revenue: Food and beverage revenue.</li><li>• Total Revenue: Total revenue, must be greater than or equal to the sum of room revenue and food and beverage revenue.</li><li>• Golf</li><li>• Laundry</li><li>• Parking</li><li>• Pay per View</li><li>• Service Charge</li><li>• Spa</li><li>• Tax</li><li>• Telephone</li><li>• Tennis</li><li>• Valet</li><li>• Internet Access: Revenue achieved from selling Internet connections via chargeable methods.</li><li>• Gaming Revenues: Revenue achieved from any gaming undertaken on property related to guest/room.</li><li>• Chauffeur/Cars: Revenue from the use of cars and or chauffeurs for a guest.</li><li>• Other: Additional revenue not identified by any of the other categories above.</li></ul>
---	-------	---

@RevenueCategoryCode	1	Code value from OpenTravel Alliance Code List Revenue Category Code (RCC). The following values are to be used: 9: Room Revenue 3: Food & Beverage Revenue 17: Total Revenue 4: Golf 5: Laundry 7: Parking 8: Pay per View 10: Service Charge 11: Spa 12: Tax 14: Telephone 15: Tennis 16: Valet 18: Internet Access 19: Gaming 20: Chauffeur/Cars 6: Other
@Amount	1	Amount value for the revenue code being reported.
@Currency	0..1	Currency for the amount transferred for the revenue code being reported, in ISO 4217 codes.

OTA_HotelStatsRS / Statistics / Statistic / StatisticApplicationSets / StatisticApplicationSet / CountCategorySummaries / CountCategorySummary	6..10	<p>Repeating element for each count value in the report. All values correspond to the totals for the date in the @Start attribute defined above.</p> <p>The following values are Required:</p> <ul style="list-style-type: none"> <li>Physical capacity: Total number of rooms at the property.</li> <li>Rooms out of order: Rooms taken out of inventory for maintenance reasons.</li> <li>Rooms not available: Rooms taken out of inventory for other reasons.</li> <li>Rooms sold: Rooms sold/on books (for future dates).</li> <li>Room arrivals: Rooms with arrival on the date (*).</li> <li>Room departures: Rooms with departure on the date (*).</li> </ul> <p>The following values are Optional:</p> <ul style="list-style-type: none"> <li>Rooms cancelled: Cancelled rooms with arrival on the date.</li> <li>Denials: Reservations that were not able to be taken for various reasons (full, LOS, etc.) and rejected.</li> <li>Day Use: Rooms that are sold to guests (internal or external) for business use such as meetings, etc.</li> <li>Complimentary: A room that is not charged to a guest.</li> </ul> <p>(*) In the case of shares with different arrivals and departures for individuals, the first arrival date and the last departure date should be used for the counts.</p>
@CountCategoryCode	1	<p>Code value from OpenTravel Alliance Code List Count Category Code (CNT). The following values are to be used:</p> <p>8: Physical capacity 9: Rooms out of order 10: Room not available 11: Rooms sold 12: Room arrivals 13: Room departures 14: Rooms cancelled 16: Denials 19: Day use 22: Complimentary</p>
@SummaryCount	1	Amount value for the count code being reported.

## 5 Appendices

### 5.1 Glossary of Terms

For the purpose of this document the following terms have been defined as follows:

Term	Definition
Statistics Publisher or Statistics Responder	A system that maintains statistical information.
Statistics Requester or Statistics Subscriber	A system that has the need to obtain statistical information.

### 5.2 Referenced Documents

The following table shows the documents upon which this document depends:

Document Title	Location/URL
Other HTNG Product Distribution specifications	Outline of most recent versions available on <a href="#">workgroup's wiki page</a>
OpenTravel Alliance Specifications	<a href="http://www.opentravel.org/specifications">www.opentravel.org/specifications</a>